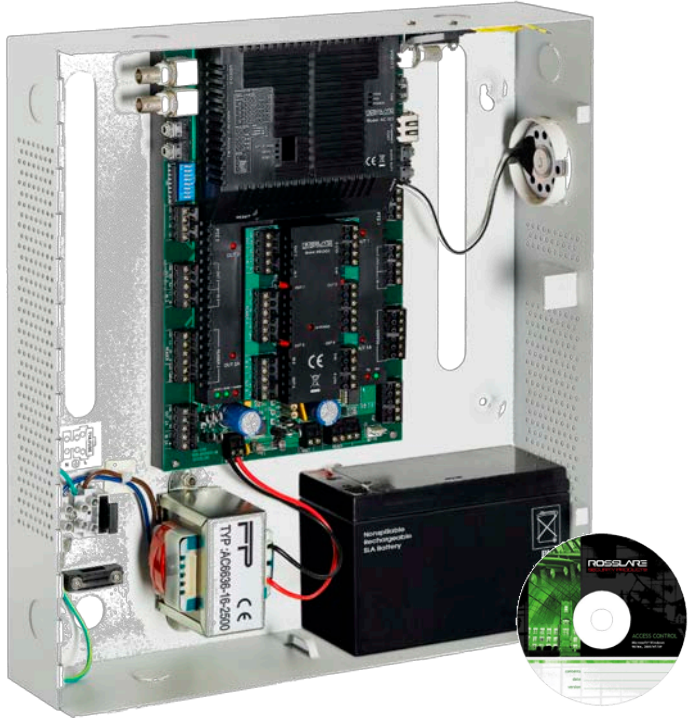


AS-525AV

ViTrax AC-525 Video Management Software

Software Manual **ViTrax**



August 2010

ROSSLARE
SECURITY PRODUCTS

Table of Contents

1. Introduction	5
1.1 Software Security.....	5
1.2 AS-525AV ViTrax Server and Client	6
1.2.1. AS-525AV ViTrax Server.....	6
1.2.2. AS-525AV ViTrax Client	6
1.3 System Specifications and Requirements	7
1.3.1. AS-525AV ViTrax System Requirements.....	7
1.3.2. Database Features (DB)	7
1.3.3. Networks	8
1.3.4. Video Surveillance.....	8
1.3.5. Video Recording Server.....	8
1.4 ViTrax Licenses	8
1.5 How to Use this Manual.....	9
2. Installing AS-525AV ViTrax PC Software	10
2.1 Connecting to the PC	10
2.2 Starting AS-525AV ViTrax Installer	11
2.3 Server Configuration	15
2.3.1. Activate the Software	16
2.3.2. Server Setup.....	19
2.4 Adding the Server to the Client.....	22
3. System Overview	25
3.1 Initiating AS-525AV ViTrax	25
3.2 AS-525AV ViTrax Main Window	26
3.3 Menu Bar	27
3.3.1. File	27
3.3.2. View	27
3.3.3. Server.....	32
3.3.4. Video	34
3.3.5. Tools.....	36

Table of Contents

3.3.6.	Help	37
3.4	Toolbar.....	38
3.4.1.	Standard Toolbar.....	38
3.4.2.	Screen Arrangement Toolbar	39
3.4.3.	Screen Control Toolbar.....	39
3.5	Structure Pane	39
3.6	Display Pane	41
3.7	Events Pane	42
3.8	Server Configuration	42
3.8.1.	Recording Properties	42
3.8.2.	Server Communication Properties	45
3.8.3.	Server Watchdog.....	47
3.8.4.	Server User Management.....	51
4.	Configuring Cameras.....	56
4.1	Setting up AC-525 Connection	56
4.1.1.	Configuring through the Camera Setup Wizard.....	56
4.2	Network IP Cameras	73
4.2.1.	Configure the IP Cameras Automatically	73
4.2.2.	Configure the IP Cameras Manually	76
5.	Setting System Options	80
5.1.1.	Screen Tab	80
5.1.2.	Screen Mapping Tab	81
5.1.3.	Miscellaneous Tab.....	82
5.1.4.	Exclusivity Tab	83
5.1.5.	Sounds Tab	84
5.2	Lock Application.....	84
6.	AS-525AV ViTrax Video Capabilities	86
6.1	Making Video Adjustments	86
6.2	Exporting Video Frames.....	87
6.2.1.	Configure Profile Properties	91
6.2.2.	Complete the Video Frame Export Setup Wizard ..	94

6.3	Enabling Video Transfer	94
6.3.1.	Specify Transfer Defaults for Newly Added Devices	96
6.4	Creating Custom Layouts	96
6.4.1.	Save Current Layout	97
6.4.2.	Create New Layout Sequence.....	98
6.5	Map Module Feature	100
6.5.1.	Add New Camera Marker	102
6.6	Archiving Backup Wizard	103
6.7	Playback Video.....	106
6.7.1.	Understand the Playback Screen.....	107
6.8	Exporting Video.....	108
6.8.1.	Export Snapshots	112
7.	Upgrading AS-525AV ViTrax Software	113
Appendix A.	Additional Utilities.....	114
A.1.	Authentication Validator	114
A.2.	Camera Status Report Utility	115
Appendix B.	Detailed Computer Specifications.....	116
B.1.	ViTrax Server Computer Specifications Minimum Requirements	116
B.2.	ViTrax Client Computer Specifications Minimum Requirements	116
Appendix C.	Technical Support	117

1. Introduction

Thank you for purchasing the AC-525 Visual Access Controller Unit (VACU) and AS-525AV ViTrax PC software.

The AC-525 is an advanced multi-door networked access controller coupled with a digital video server and cutting-edge DVR technology. The integrated panel supports two analog camera inputs. It has a built-in embedded Linux OS with web server, which enables advanced network communication options. The AC-525 streams video in ISO standard compliant MPEG-4 (SP) in complete synchronization with real-time access control data.

AS-525AV ViTrax is a digital video recording and remote surveillance Client/Server suite. It supports major Network (IP) Cameras, and Directshow compatible devices such as USB cameras and runs on Microsoft Windows® operating system.

The AS-525AV ViTrax Software can function as standalone software for video stream management, however for full integration with the AC-525 access control AS-525 AxTrax, AS-525AV ViTrax server, and AS-525AV ViTrax client are required.

AS-525AV ViTrax features a proprietary multimedia database, ViTrax server Watchdog which restarts the server automatically in case of PC power failure recovery to resume local and remote data flows, as well as integration with Google Maps interface that allows you to place cameras on actual maps for easy browsing.

This manual explains how to install and use AS-525AV ViTrax PC software with the AC-525 Visual Access Controller Unit. For more information on the AC-525 system, refer to the AC-525 Access Controller Unit (VACU) Hardware Installation manual and the AS-525 AxTrax Access control management software manual.

1.1 Software Security

Using AS-525AV ViTrax wizard, users can custom design the system to meet their specific needs, the access to AS-525AV ViTrax software is password controlled.

It is possible to grant different operators restricted security rights with access to only specified elements of the system or with read-only access.

1.2 AS-525AV ViTrax Server and Client

AS-525AV ViTrax software provides full video management for the AC-525 and third party servers and IP cameras. The software package consists of two applications:

- AS-525AV ViTrax Server
- AS-525AV ViTrax Client software

Both are integrated into a single installation package for your convenience. You can choose to install both or just one of these applications depending on your specific needs.

1.2.1. AS-525AV ViTrax Server

AS-525AV ViTrax operates through a dedicated server computer, which communicates with the access control panels and can serve an unlimited number of network clients.

AS-525AV ViTrax Server is a behind-the-scenes application that captures, processes, and records video before serving it to a local or remote AS-525AV ViTrax Client.

Install AS-525AV ViTrax Server on the computer that controls the Access Control panels and manages the database. AS-525AV ViTrax includes a full suite of administrator functions, including the ability to view multiple local and remote sources, record video for local or remote playback later, export recordings to preserve and present as evidence, change video parameters, and manage the database.

1.2.2. AS-525AV ViTrax Client

AS-525AV ViTrax Client is the User interface and video management application, from which all users have access to manage the AS-525AV ViTrax Server, cameras and network settings, view live video or archived video, feeds provided that the AS-525AV ViTrax Server is operating and connected to the panel network.

1.3 System Specifications and Requirements

The following are the system capabilities and the system requirements.

1.3.1. AS-525AV ViTrax System Requirements

These are the basic requirements for the system, for detailed computer configurations please see Appendix B Detailed Computer Specifications, on page 116.

Operating System	Microsoft® Windows 2000 Windows XP Home / Professional, Windows Vista Windows 7 Windows Server 2003
Motherboard	Intel® 915, 945, and 965 Family
Memory	Intel® 945G Express Chipset with a minimum of 64 MB memory
HDD	250 GB recommended. Depends on frame-rate, compression, and storage period
Network	LAN card required for TCP/IP networking

1.3.2. Database Features (DB)

DB Format	Microsoft® MSSQL and Proprietary Files – Password Protected
Embedded PDF Files	Most current Software and Hardware Manuals
DB Backup	Backup Now Option/ Clear All Now Option DB Export Config and/or Events – Selectable Backup and Restore Auto File Naming for Backups Automatic Backups
DB Export Formats	.mp4 and .avi file exports
Database Retention	Programmable Period

1.3.3. Networks

Supported Access	AC-525
Control Panel Models	AC-525 with MD-IO84 I/O extension board or MD-D02 Door Expansion Board
Panel Networks Communication Interface	TCP-IP

1.3.4. Video Surveillance

Server Mode	Local Network and Remote network Server and Client module
Streaming Support	ISO Standard MPEG-4
Selectable Viewports	Matrix Viewports
PTZ Presets	Two per viewport support Pelco-D

1.3.5. Video Recording Server

Recording	MJPEG4/MJPEG/JPEG compression
Record Commands	Sent based on pre-defined access control events
Motion Detection	Selectable Motion areas and Sensitivity in FOV Zones
Advanced Compression	Proprietary Storage with Custom Retrieval Tools

1.4 ViTrax Licenses

Various ViTrax licenses are available, from Level 0 (provided free of charge), which features one camera with one local client to Level 5, which features unlimited cameras and unlimited clients. The table below lists the various available licenses.

Part Number	Description
AS-525AV-L0	Level 0: 1 Camera, 1 Local client
AS-525AV-L1	Level 1: 2 Cameras, 1 Client
AS-525AV-L2	Level 2: 4 Cameras, 1 Client
AS-525AV-L3	Level 3: 9 Cameras, 3 Clients
AS-525AV-L4	Level 4: 16 Cameras, 4 Clients
AS-525AV-L5	Level 5: Unlimited Cameras, Unlimited Clients

1.5 How to Use this Manual

This manual is constructed in a step-by-step format but can also be used as a quick reference guide.

Installers who are new and unfamiliar with the setup procedure should read this manual from cover to cover and should read each chapter in the order that it is presented. However, if you are already familiar with AS-525AV ViTrax software, this manual can be used as a quick reference guide in order to fine tune your knowledge about the AS-525AV ViTrax system.

A PDF of this manual can also be found on the AS-525AV ViTrax software installation CD.



Note:

This manual refers to AS-525AV ViTrax software version 1.7.5 and later.

2. Installing AS-525AV ViTrax PC Software

The installation of AS-525AV ViTrax PC software package from the CD-ROM is a mostly automated process done by a smart installer program.

The installer helps with tasks such as entering a unique server name, administrator login setup, enabling access from remote AS-525AV ViTrax clients, TCP/IP port selection, and application running mode. You can always come back to this Wizard later to change the settings through the **Start** Menu.

The software consists of two applications, AS-525AV ViTrax Server and AS-525AV ViTrax Client. During the installation process, you are presented with a choice to install either both of the available applications or just one of them.

AS-525AV ViTrax Server requires activation with the activation key provided when the product was purchased. The server can only be activated on one computer. If at a later date you need to move the installation to another computer, contact Rosslare Technical Support.

**Note:**

Remember to keep your activation key in a safe place. If you do lose the activation key, it can be viewed by selecting About from the menu bar.

AS-525AV ViTrax Client software does not require activation, and can be installed on as many computers as you want.

2.1 Connecting to the PC

Before using the software, it is important to make sure that the AC-525 hardware and any additional components, i.e. cameras, are connected correctly.

Create a connection between the hardware and the computer. The AC-525 is not connected directly to the computer; it is connected to the IP network.

Refer to the AC-525 Hardware Installation manual in order to configure the hardware to the computer.

2.2 Starting AS-525AV ViTrax Installer

Install AS-525AV ViTrax software using the installation CD-ROM.

To begin installing AS-525AV ViTrax:

1. Close all applications.
2. Insert the CD into the computer's CD drive.
If the Setup Wizard does not start automatically, click **Start** on the Windows taskbar, and click **Run**. Enter **D:\Setup**, where D is the letter that corresponds to the CD drive. For example, if the CD drive is the E drive, enter **E:\setup**.
3. Click **Install** to continue the installation. The Welcome to the Install Shield Wizard window opens.

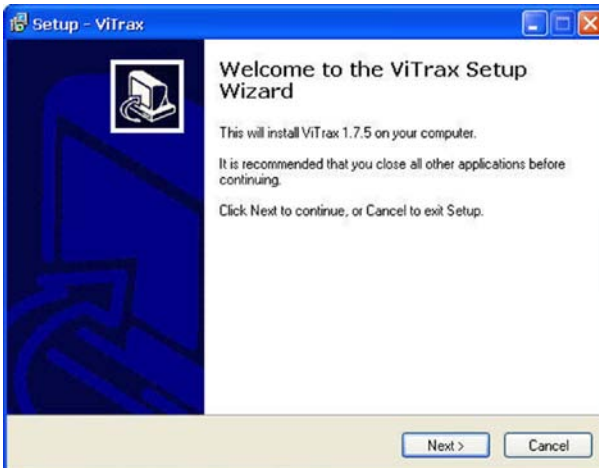


Figure 1: Welcome Rosslare Setup Wizard Window

4. Click **Next** to display the Software License Agreement window.
To cancel, click **Cancel** to quit AS-525AV ViTrax PC software installer.



Figure 2: Software License Agreement Window

5. After reading the Software License Agreement, choose **I accept the agreement**. Click **Next** to continue with the installation.
6. Choose the Destination Location.
The installer prompts you to enter the destination location for the installation. This is where AS-525AV ViTrax PC software is stored on the hard drive.

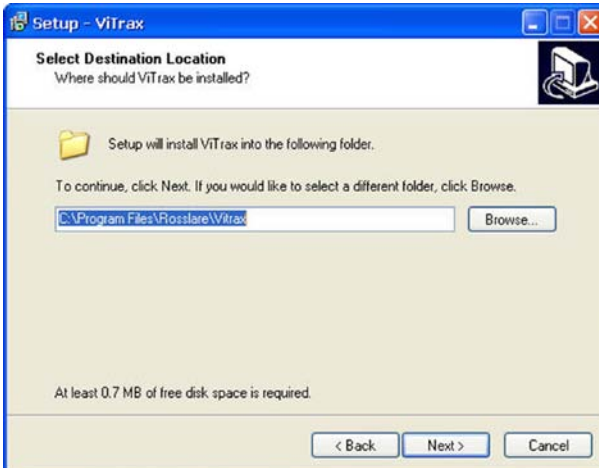


Figure 3: Setup Destination Window

7. To accept the default location, continue with step 9.

- To change the installation location, click **Browse**, and select a new installation location.
- Click **Next** to continue with the installation.
The Install Components window opens.

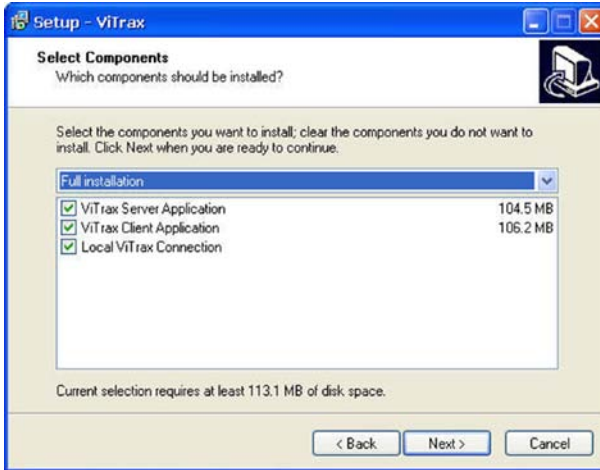


Figure 4: Install Components Window

- Select the components that you want to install.
Check the **ViTrax Server Application** checkbox to select the server or check the **ViTrax Client Application** checkbox to select the client.
If you want to be able to view and manage the server from the same machine, check both the **ViTrax Server Application** and **ViTrax Client Application** checkboxes.
- Click **Next** to continue with the software installation.
- Place a shortcut for this application in the Start Menu Folder so that every time the host computer reboots, it automatically restarts the AS-525AV ViTrax software.
This window allows you to select the Start menu folder.



Figure 5: Select Start Menu Window

13. To accept the default shortcut location, go to step 15..
14. To change the shortcut location, click **Browse**.
15. Click **Next** to continue with the installation.
The Select Additional Tasks window opens.

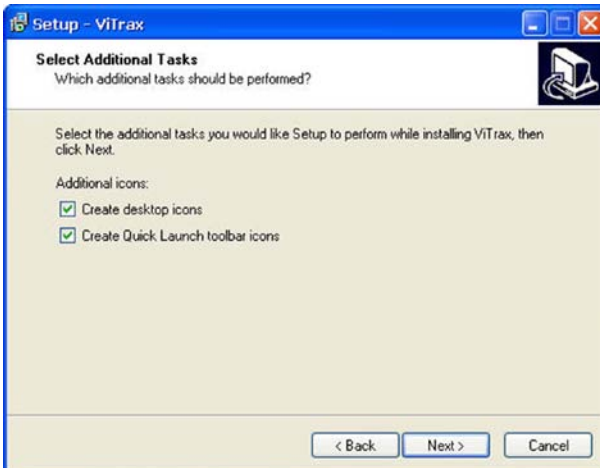


Figure 6: Select Additional Tasks Window

16. Select the relevant additional tasks, as required, and then click **Next** to continue.

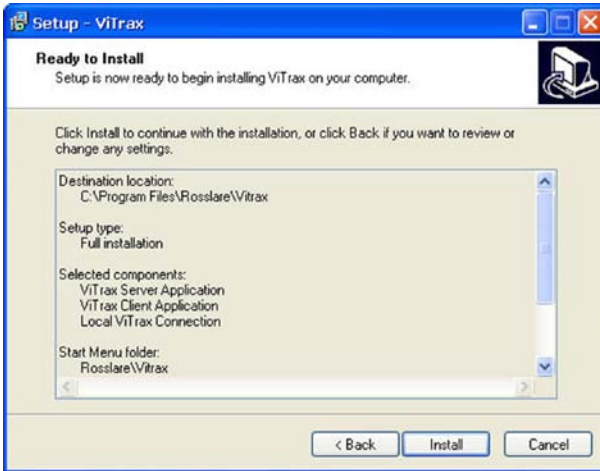


Figure 7: Ready to Install Window

All the installation settings are now entered. Installation can now begin. Click **Cancel** to cancel the installation, or, click **Install** to install AS-525AV ViTrax software.

When the Setup Completed window appears, the software is successfully installed. By default, the **Run server setup wizard (recommended)** checkbox appears checked. If you do not want to launch the Server Setup Wizard at this stage, clear the checkbox.

17. Click **Finish** to exit the installer.

2.3 Server Configuration

Before using the software, you must set up the server configuration using the Server Setup Wizard and activate the software.

To open the server configuration wizard:

1. In the last screen of the Rosslare Setup Wizard, make sure the **Run server setup wizard (recommended)** checkbox is checked. Click **Finish**.
Or
From the **Start** menu, select **Rosslare → Tools → ViTrax Server Setup Wizard**.
The Server Setup wizard opens.

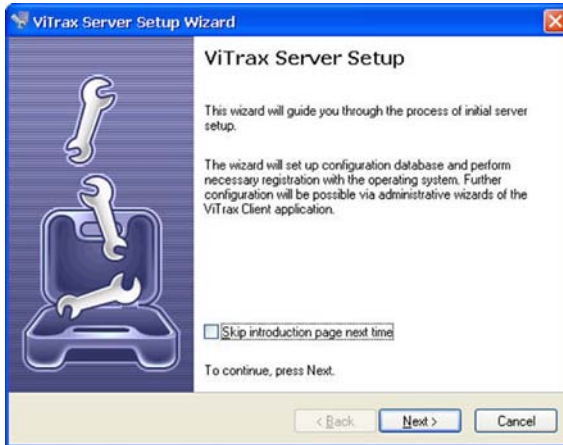


Figure 8: Server Setup Wizard Window

This wizard guides you through the initial server setup. Before installing the server, you will be prompted to activate the software.

2.3.1. Activate the Software

The software must be activated in order to use it and to ensure proper support.

You can activate the software in the following ways:

Internet Activation

Internet activation is the quickest and most convenient way to activate the software if the machine is connected to the Internet.

Phone Activation

Phone Activation is the other option to choose if you are not connected to the Internet and wish to activate the software.

No Activation

The No Activation option in the Activation Wizard uses the demo version of AS-525AV ViTrax. This option limits use of the software to Shareware use, which includes only basic features and configuration capabilities.

To activate the software via Internet:

1. Start AS-525AV ViTrax software from the Windows **Start** menu or click the AS-525AV ViTrax icon on the desktop.
2. When the Rosslare Activation Wizard opens, click **Next** to continue the activation. The Product Activation Method window opens.

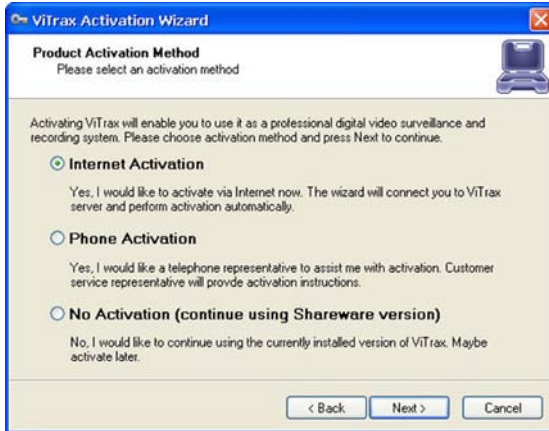


Figure 9: Product Activation Method Window

3. If the machine is connected to the Internet, select **Internet Activation** to activate the full version of the software.
4. Click **Next** to continue the activation. The Activate Product over Internet window opens.

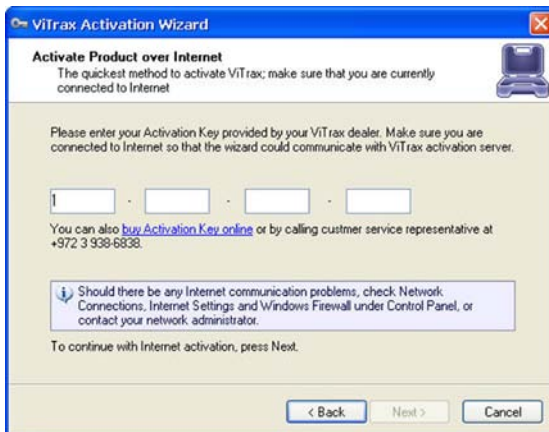


Figure 10: Activate Product over Internet Window

5. Enter the activation key that is found on the software disk. Click **Next** to continue with the activation. The activation finishes. The Activation Completion window displays the description of the edition and the access limitations.
6. Click **Finish** to exit the activation wizard and continue installing the server configuration.

To activate the software via Phone:

1. Follow steps 1 and 2 in the above activation process.
2. If the machine is not connected to the Internet, select **Phone Activation** to activate the full version of the software.
3. Click **Next** to continue the activation. The Product Activation over the Phone window opens.

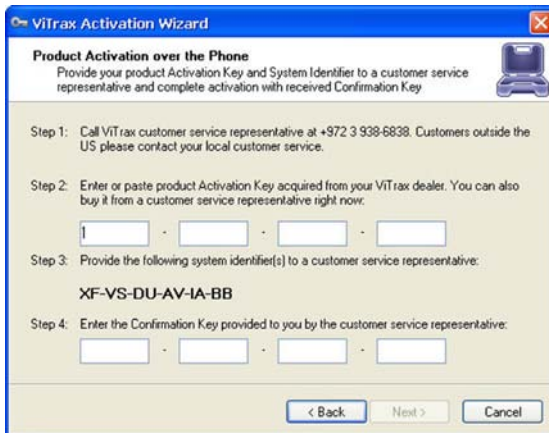


Figure 11: Activation Wizard Window

4. Type the Activation Key in **Step 2** on the screen. You can find the Activation Key on the software disk.
5. Provide the system ID that appears in this window to the customer service representative on the phone.
6. Call a Rosslare representative at +972-3-938-6838 for the Confirmation Key, and type it in **Step 4** on the screen.
7. Click **Next** to complete the activation. The Activation Completion window displays the description of the edition and the access limitations.
8. Click **Finish** to exit the activation wizard and continue installing the server configuration.

To select the No Activation option:

1. Follow steps 1 and 2 in the above activation process.
2. Once the Product Activation Method window opens, select **No Activation (continue using Shareware version)**.
3. Click **Finish** to exit the Activation Wizard and continue installing the server configuration.

2.3.2. Server Setup

After activating the software, continue with the server configuration setup.

To setup the server configuration:

1. Specify the server properties, such as unique identifier, title, and database settings in the Server Properties window.

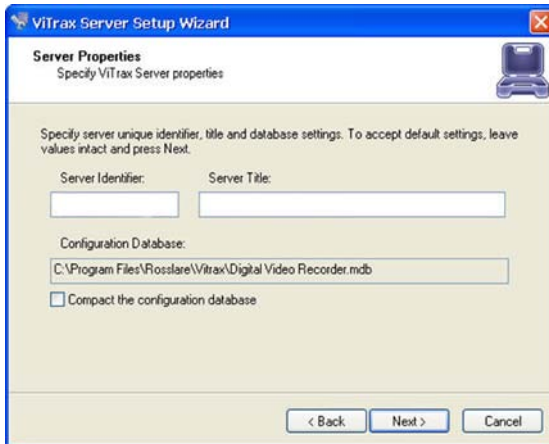


Figure 12: Server Properties Window

Enter the Server ID and Server Title. Choose the destination location for the configuration database. Check the **Compact the configuration database** checkbox to optimize the configuration database in the future.

2. Click **Next** to continue the Server Setup Wizard. The Server Administrator Settings window opens.

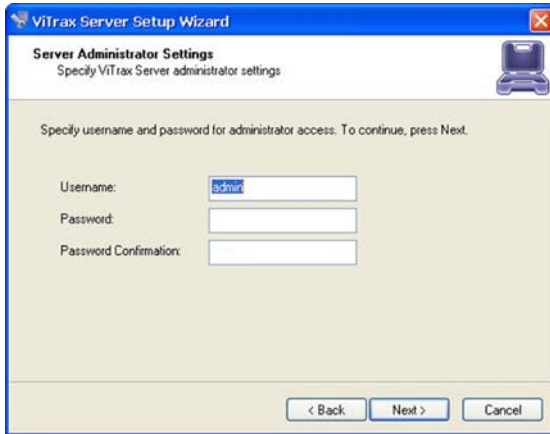


Figure 13: Server Administrator Settings Window

This window determines the settings for the Administrator. Leave the default user name as **admin** and enter a unique password in both lines. You can add users at a later time.

3. Click **Next** to continue with the Server Setup Wizard.
4. Determine the Server Network and Port Settings.

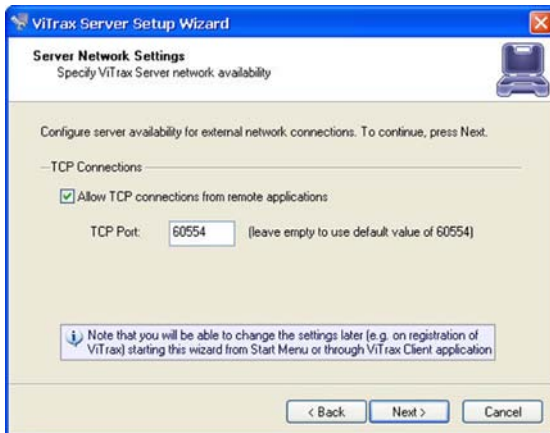


Figure 14: Server Network and Port Settings Window

The default firewall port that Rosslare uses is 60554. You can change it to any port as long as it is open on the firewall. Check with the network administrator or internet service provider about the appropriate firewall settings.

5. Click **Next** to continue with the Server Setup wizard. The Server Execution Mode window opens.

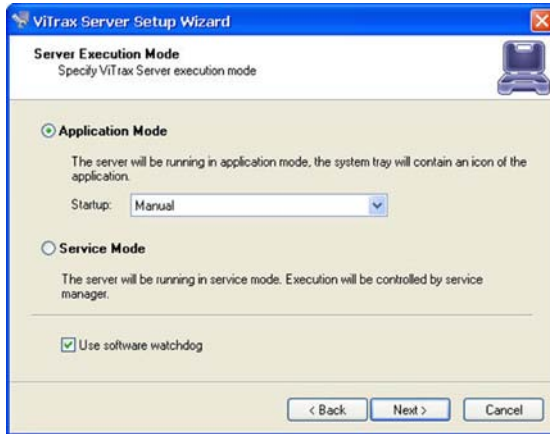


Figure 15: Server Execution Mode Window

This window has two options:

- **Application mode** — starts the program manually via three options in the dropdown menu:
 - **Manual** — double-click the program to get it started
 - **Automatic with any user logon** — initiates the software when any user logs into Windows on that machine
 - **Automatically with current user logon** — the user currently logged into Windows is the user who activates AS-525AV ViTrax upon Windows login
- **Service Mode** — the software always runs in the background even though nobody has yet logged into Windows. This means that you can lock everyone out of Windows and never have to worry about any of the data. Also, if the power ever goes out, upon power recovery, the system turns on and nobody needs to physically log into windows or turn AS-525AV ViTrax software on in order to keep the data flowing both locally and remotely.



Note:

The **Service Mode** is the recommended option.

If AS-525AV ViTrax software is set up in **Service Mode** it can be stopped by browsing the windows services or by using the **ViTrax Server Setup Wizard** (see Step 1 above).

- Click **Next** to continue with the Server Setup wizard. The Server Execution Control window opens.

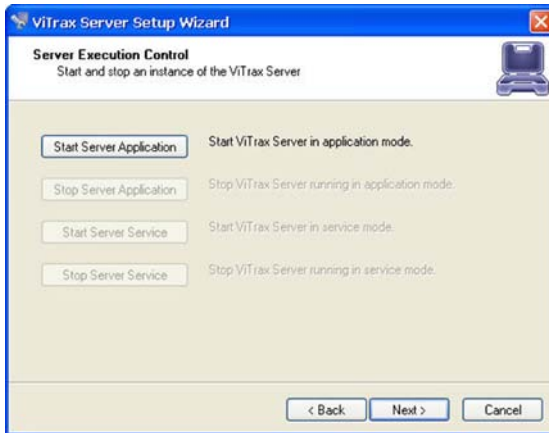


Figure 16: Server Execution Control Window

The options shown here depend on the choice made in the previous screen. Choose to either **Start Server Application** or **Start Server Service**.

- Click **Next** to continue with the Server Setup wizard.
- When the Wizard Completed window appears, click **Finish** to exit the installer. The ViTrax Server has been successfully installed.

2.4 Adding the Server to the Client

Before using AS-525AV ViTrax software, you must add the server information to the client application.

To add the server information:

- Double-click the ViTrax Client connection icon located on the desktop. The main screen is displayed.



Note:

A Warning dialog box appears, stating that there are no video cameras found on the local server. If you click **Yes**, the software scans for cameras using auto detection (in the Network Scan Wizard). If you click **No**, you can add the cameras manually (in the Camera Setup Wizard).

- From the Server menu, click **Server** and then **Add Server**.

- When the Add New Server Wizard appears, click **Next**. The Adding New Server window opens.

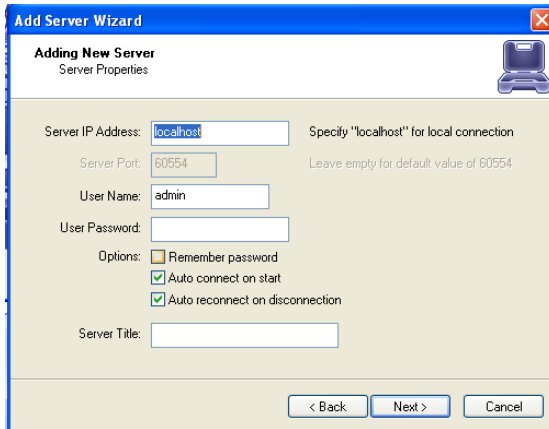


Figure 17: Adding New Server Window

The following data is added in this window:

- **Server IP Address:** The IP or the DNS of the server you want to connect. If the server is on the same machine, type **localhost**.
 - **Server Port:** The port the server is running on.
 - **User Name:** Enter the login username user name, by default, *Admin*
 - **User Password:** Enter the password associated with the user
 - **Options:**
 - **Remember password** – If you choose to leave this field unchecked, the server requests a password every time you log on.
 - **Auto connect on start** – Selecting this option auto connects to the server as soon as you open the Client.
 - **Auto reconnect on disconnection** – Selecting this option instructs the program to automatically reconnect you in the event of disconnection.
 - **Server Title:** Enter a name for the server.
- To continue adding a server, click **Next**. The Wizard Completed window opens. Click **Finish**.
 - Click **File** and then **Save As**.

6. Click the Desktop icon to select Desktop in the **Save in** line.
7. Find the ViTrax Client and highlight it so the name appears in the **Save in** line.
8. When the program asks to override the client which already exists, click **Yes**.



Note:

If you do not click **Yes**, the new server is not saved in the server list on the left and you have to re-enter the information when you reopen the program.

The client installation is now complete. You now have video feed from the connected cameras.

3. System Overview

AS-525AV ViTrax is controlled through an easy-to-use interface featuring:

- Tree-view list of all aspects of the site set-up
- Toolbar for standard operations

3.1 Initiating AS-525AV ViTrax

This section explains how to start the software and login to the main window.

1. Before you start AS-525AV ViTrax software, you must first turn on the server. Select from the **Start** menu → **Programs** → **Rosslare** → **ViTrax Server** or double-click the icon below found on the Windows desktop.



Figure 18: ViTrax Desktop Icons

2. Once the server is connected, you can start AS-525AV ViTrax software. Select from the **Start** menu → **Programs** → **Rosslare** → **ViTrax Client** or double-click the icon on the Windows desktop.
3. The Authorization dialog box for the remote server opens.

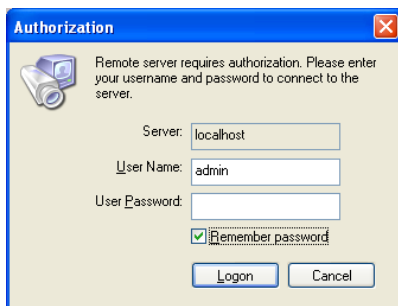


Figure 19: Authorization Dialog Box

4. Type the password you chose in the Server Setup Wizard. Click **Logon** to have access to AS-525AV ViTrax. AS-525AV ViTrax Client main window opens.

3.2 AS-525AV ViTrax Main Window

All the central functionality of AS-525AV ViTrax is available from its main window.

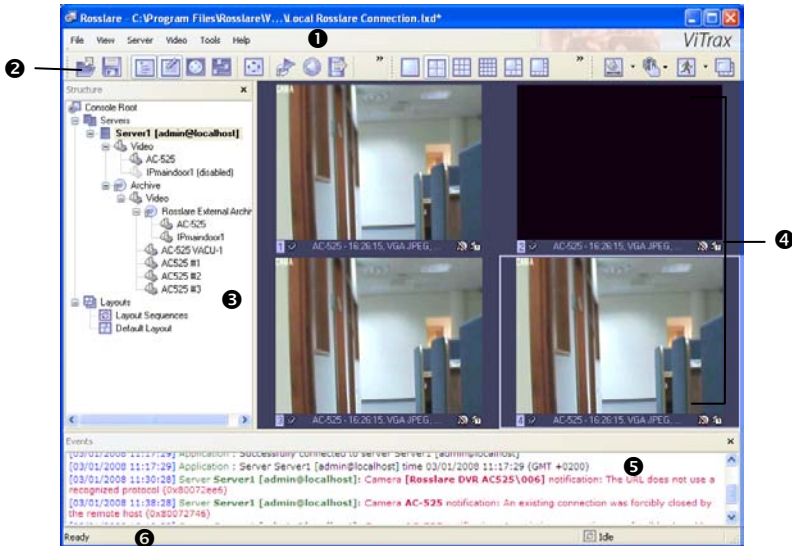


Figure 20: AS-525AV ViTrax Main Window

AS-525AV ViTrax is divided into six sections.



Note:

This screen is not the initial screen that appears upon start-up. It is only used to better explain the system overview.

- ❶ **Menu Bar** Access to the general operations and setup of the system
- ❷ **Toolbar** Contains icons for key management tasks
- ❸ **Structure Pane** Configure, monitor, and control client and server elements in the system
- ❹ **Display Pane** Displays the hierarchy of the selected element
- ❺ **Events Pane** Lists the time and date record of server-client connection
- ❻ **Status Bar** Displays general status information such as system readiness and screen layout sequence options.

3.3 Menu Bar

Access to the general operation and setup of the system is through the menu bar. It contains menu options such as the file, view, server, video, tools, and help menus.

3.3.1. File

Manage the client files by clicking on tasks in the menu bar, by pressing the shortcut keys on the keyboard, or by clicking the related toolbar icons, when applicable.

New	Creates a new AS-525AV ViTrax client file with the file extension of .lxd. Access this task on the keyboard with shortcut key Ctrl-N.
Open	Opens previous AS-525AV ViTrax configuration files. The video stream of the selected file displays in the Display Pane. Access this task on the keyboard with shortcut key Ctrl-O or by clicking the Open Configuration icon on the toolbar. (See Toolbar, on page 38.)
Save	Saves current client configuration file. Access this task on the keyboard with shortcut key Ctrl+S or by clicking the Save Configuration icon on the toolbar. (See Toolbar, on page 38.)
Save As	Saves the client configuration to a different file or even to a floppy.
Recent Files	Displays path of recently opened client files.
Exit	Closes AS-525AV ViTrax Client.

3.3.2. View

Select the items you want to see in AS-525AV ViTrax window through the view menu bar options such as toolbars frequently used and the preferred layout of the Viewing Pane.

Toolbars

Choose to view or hide the following toolbars:

- **Standard** —contains most commonly used tasks and functions
- **Screen Arrangement** —manipulates the views and camera layouts to the own preference

- **Screen Control** —manages video streams and camera view choices in the Display Pane

Panes


Toggle between viewing and hiding the following panes in AS-525AV ViTrax window:

Structure —the pane that is visible on the left side of AS-525AV ViTrax window. It is the control center of the system and is most useful when you are looking at cameras from multiple locations and multiple AS-525AV ViTrax servers (see

- Structure Pane, on page 39).
- **Events** —the pane that is visible on the lower half of AS-525AV ViTrax window. It gives the important notifications such as when you are connecting to a server successfully, lets you know if you have input improper user names and passwords, and gives you error codes when needed.
- **PTZ Control** —controls the PTZ tasks if you have a PTZ compatible camera attached to the system.
- **Video Adjustment** —the pane that contains tools to adjust every individual camera with its own settings (see Making Video Adjustments, on page 87).

Status Bar

This bar displays general status information such as system readiness and layout sequence options. Click the Manage

Layout Sequences icon  to access the Manage Layout Sequence feature (see Creating Custom Layouts, on page 96)

Full Screen

In full screen, none of the panes are seen and the cameras expand to their maximum size to fill the full screen of the monitor.

Access this feature from the **View** menu, the F11 shortcut key on the keyboard, or by clicking on the Full Screen icon on the toolbar (see Toolbar, on page 38).

Minimize full screen view by pressing the F11 shortcut key on the keyboard or by clicking Exit in the Full Screen dialog.



Figure 21: Full Screen Dialog

Always on Top

Enabling this feature prevents other application windows from opening on top of AS-252 ViTrax Client windows until you uncheck **Always on Top**.

Screen Arrangement

This feature allows you to manipulate the views and camera layouts to your own preference.

Equal Size Screens

This feature displays the screens in the Display Pane in a designated number of equal size screens.



Figure 22: Screen Arrangements

Large Size Screens

This feature displays the screens in the Display Pane in a designated number of equal size screens with 1-2 large screens.



1 Large and 5 Smaller Screens



1 Large and 7 Smaller Screens



2 Large and 8 Screens



1 Large and 12 Smaller Screens

Figure 23: Large Screen Arrangements

Maintain Aspect Ratio

When enabled, this feature maintains the correct proportions of the images appearing in the Display Pane screens.

Screen Details

Select the details you want to appear on each of the screens in the Display View with the following preferences:

- Show Screen Footer** Displays footer under each screen in the Display Pane. Access this task on the keyboard with shortcut key Alt+Shift+O.
- Show Current Frame Time** Shows current frame time of the displayed image in the screen footer of selected screens. Access this task on the keyboard with shortcut key Alt+Shift+T.
- Show Image Resolution** Shows the resolution of the displayed image in the screen footer of selected screens. Access this task on the keyboard with shortcut key Alt+Shift+R.

Show Average Image Size per Frame	Shows the average image size per frame of the displayed image in the screen footer of selected screens. Access this task on the keyboard with shortcut key Alt+Shift+Z.
Show Average Frame Rate per Second	Shows the average frame rate per second (fps) of the displayed image in the screen footer of the selected screens. Access this task on the keyboard with shortcut key Alt+Shift+F.
Digital Pan-Tilt-Zoom	This feature does not work in this version.
Show Detected Motion	Shows motion detection of the displayed image in the selected screen. Access this task on the keyboard with shortcut key Alt+Shift+M.
Hide Detected Motion for All Screens	Hides motion detection in all displayed screens.

Time Presentation

Choose between the following time preferences:

- Local Time
- UTC Time (Coordinated Universal Time)
- Server Local Time

Save Current Layout

The Layouts feature group cameras from different AS-525AV ViTrax servers/locations into groups for more efficient monitoring and better management. You can select this option to save the currently selected layout.

View and select the available layouts in the Structure Pane tree-view. The selected view displays in the Display Pane (see Creating Custom Layouts, on page 96).

Manage Layouts

This feature allows you to set the preferences of all layouts. Also access this option by clicking the Manage Layouts icon in the Structure Pane (see Creating Custom Layouts, on page 96).

Deactivate Layout Sequences

This feature deactivates layout sequences.

Manage Layout Sequences...

When layouts are created, they can be used to create video sequencing through the Manage Layout Sequences feature. This feature can be used to define which layout is activated upon startup. Also access this feature by clicking the Manage Layout Sequence icon in the Structure Pane (see Creating Custom Layouts, on page 96).

Manage Maps

This feature allows you to quickly and conveniently locate cameras for viewing placed on Google Map™ and/or on the own JPEG map (see Map Module Feature, on page 100).

3.3.3. Server

Manage the servers by clicking on Server in the menu bar or by pressing the shortcut keys on the keyboard, when applicable.

Add Server

This menu option launches the Add Server Wizard (see Adding the Server to the Client, on page 22).

Remove All Servers

This menu option removes all server connections.

Upon selection, the system asks you to confirm your choice to remove the server connection.

Selected Servers

Manage the servers with the following options in the submenu:

- Connect** Connects to a selected server
- Reconnect** Reconnects to a selected server
- Disconnect** Disconnects from a selected server
- Refresh** Updates the server connection

Tasks	<p>Manages and configure server and camera options with the following:</p> <ul style="list-style-type: none">• Server Security Setup Wizard• Manage Server Security• Automatically discover network video devices• Camera Setup Wizard (see Configuring Cameras, on page 56)• Video Frame Export Setup Wizard (see Exporting Video, on page 108)• Open Archive (see Playback Video, on page 106)• Manage Watchdogs (see Server Configuration under Server Watchdog, on page 47)• Recording Properties (see Server Configuration under Recording Properties, on page 42)• TCP Communication Properties (see Server Configuration under Server Communication Properties, on page 45)• Backup server's archive data (see Archiving Backup Wizard, on page 103)• Find Network Cameras (see Network IP Cameras, on page 73)• Refer to the AC-525 Hardware manual to see a list of compatible cameras.
Move Up	Scrolls up if you have multiple servers
Move Down	Scrolls down if you have multiple servers
Remove	Removes server connection
Properties	Sets server preferences

Connect All Servers

This feature connects all servers on the system. Access this feature on the keyboard with shortcut key Ctrl+Shift+C.

Disconnect All Servers

This feature disconnects all servers from the system. Access this feature on the keyboard with shortcut key Ctrl+Shift+D.

Manage Servers

Add, remove, configure, and connect or disconnect the servers with this feature.

3.3.4. Video

The video menu options manage the video properties of the images displayed in the Display Pane.

Stream

This feature enables you to pick which camera you want to view in the selected camera window.

Transfer

This feature sets the video transfer rate, bandwidth controlled broadcast time, motion control video transfer rate, and recompression properties (see Enabling Video Transfer, on page 94).

Digital-Pan-Tilt-Zoom

This feature enables you to select, drag, and zoom in/out of the displayed PTZ camera image in Displayed View.

Also access this feature from **Screen Details** in the **View** menu choice.

Enable	If selected, enables digital PTZ
Default Tool	Changes the cursor to the default cursor setting
Drag Tool	Changes the cursor allowing you to drag the image in order to focus on a desired area
Zoom In Tool	Changes the cursor allowing you to zoom in on the image in order to focus on a desired area
Zoom Out Tool	Changes the cursor allowing you to zoom out of the zoomed image
Zoom Out to Full Frame	Zooms out back to the full image frame

Show Detected Motion

This feature shows motion detection of the displayed image in the selected screen in the Display Pane.

Also access this feature from **Screen Details** in the **View** menu choice.

Properties

This feature shows camera properties of the screen selected in the Display Pane.

AC-525 Properties

Shows the complete access control related properties including Video, Time & Date, USB, and PTZ settings

Motion Detector Properties

Shows the motion detector properties (if the AC-525 has motion detector enabled), including motion sensitivity, and exclusion areas

Maximize

This feature toggles between current Display Pane view and an enlarged view of a selected screen across the whole Display Pane area.

Freeze

This feature freezes the video image of the selected camera, allowing you to further inspect the frozen image.

Current Frame Subtitles

Allows you to define and show various subtitles associated with the selected camera.

Enabled

Enables or Disables the subtitle feature for the selected camera.

Properties

Allows you to define what will show in the subtitle as well as set the word position on the screen and the font face, size and color.

Copy Current Frame to Clipboard

This feature allows you to copy currently rendered video frame to Clipboard. Only the frame from a selected screen is copied.

Save Current Frame As...

This feature allows you to save currently rendered video frame to a file. Only the frame from a selected screen is saved.

Also access this feature by clicking the Save Current Frame As icon in the toolbar.

Un-map All Screens

This feature allows you to un-map the video stream from the Display Pane. Also access this feature on the keyboard with shortcut key Alt+Shift+U.

Automap Available Screens

This feature allows you to automatically map the video stream to the available Display Pane. Also access this feature on the keyboard with shortcut key Alt+Shift+A.

Automatically Show Video on Alert Event

This feature allows you to automatically map a networked IP camera in order to get a video stream from the camera upon an Alert event originating from the camera, see Figure 60: Data Recording Window, Figure 62: Motion Control Tab and the associated explanation there.

You can prevent video streams from being replaced by this feature by locking the image on the layout view by pressing the Push Pin Icon.

3.3.5. Tools

The **Tools** menu options manage password access security, viewing files, and application options and preferences.

Lock Application

This feature locks the application until an exclusivity mode password is provided to unlock it.

When you click on **Lock Application**, you are prompted to define a non-empty exclusivity mode password.

Utilities:

This feature opens and plays selected media files. You navigate the Media File window by selecting the desired tool from **Navigation** in the menu bar or by clicking on VCR standard navigation icons in the Standard toolbar.

Open Media File

This feature allows you to open a previously saved video file

Camera Status Report

This feature opens a dialog allowing you to run a status report on the various cameras connected to the system.

Options

This feature modifies settings for AS-525AV ViTrax such as screen options, screen mapping, exclusivity, and other options (see Setting System Options, on page 80).

3.3.6. Help

The **Help** menu options provide options to help you accomplish various tasks.

ViTrax on the Web

This feature opens Rosslare website: www.Rosslaresecurity.com

Problem Report Wizard

This feature links you to a Problem Report wizard. The wizard prompts you from screen to screen. The final report is sent to a Rosslare service representative. This wizard can also be found in windows program tree under Rosslare → ViTrax → Tools.

About ViTrax Client

This feature lists product information such as product version number, module version number, product activation key, website address, and email address.

3.4 Toolbar

The toolbar contains shortcuts to major menus and commands. Click on each icon to transition to the desired section.

3.4.1. Standard Toolbar



Open Configuration—This button allows you to open previous AS-525AV ViTrax configurations. It is most useful if you are exporting configurations from one machine to another.



Save Configuration—This button allows you to save changes made to the AC-525. It will continue to save into the same file unless you click on File and Save As; then you can save to a different file or even to an external memory, such as a USB 2.0 memory key.



Toggle Structure Pane— This button toggles between seeing and not seeing the structure pane on the left side of AS-525AV ViTrax window. Access this pane on the keyboard with shortcut key Alt+Shift+S.



Toggle Events Pane—This button toggles the events window. Access this pane on the keyboard with shortcut key Alt+Shift+E.



Toggle PTZ Control Pane — This enables the Digital Pan-Tilt Zoom option. PTZ compatible cameras are currently not supported in this version of the software.



Toggle Video Amplification Pane— This button toggles the video amplification pane. When this button is pressed, a pane opens from which you can adjust the brightness, contrast, saturation, sharpness, and hue for any camera.



Toggle Audio Player Pane— This button toggles the Audio listening pane. When this button is pressed, a pane opens from which you can select an AC-525 platform and activate or deactivate the audio feed.



Toggle Full Screen Mode — This button toggles full screen mode. In full screen, none of the panes are seen and the cameras expand to their maximum size to fill the full screen of the monitor.



Open Archive — This button opens the archive viewer window. You can view archived data of the connected server.



Manage Maps — This button toggles map module window for managing and viewing cameras on Google or previously added maps.



Save Current Frame as — This button allows you to save currently rendered video frame into file. Only the frame from a selected screen is saved.



Wizards — The wizards icon gives you a shortcut to various server, camera options, and configurations. You can also access these features through the right-click menus in the software.

3.4.2. Screen Arrangement Toolbar



Views — These buttons allow you to manipulate the views and camera layouts to your own preference.

3.4.3. Screen Control Toolbar



Screen Footer — This button allows you to display a variety of information beneath each camera window. It can display frame rate, time, picture quality, recording, motion detection, and image size. The screen footer is the text below each camera.



Screen Stream Selection — This button allows you to pick which camera you want to view in the selected camera window. This can also be done through the right-click menus and by dragging the desired camera from the structure pane to the desired display window, or by right-clicking on any camera window and selecting Stream.



Show Motion — This button toggles between showing the motion outlined on the selected camera screen or not. Motion detection must be set up before this feature can be activated.



Maximize Screen — When pressed, this button puts the selected camera into a single view. If pressed again it returns to the previous view. This can also be accomplished by double clicking on the camera of choice.

3.5 Structure Pane

The structure pane is the control center of the ViTrax AS-525. You set up the AC-525, the cameras, and all third party servers in the structure pane.

In the structure pane it is also possible for you to manage many servers from one window by right-clicking on the server of the choice.

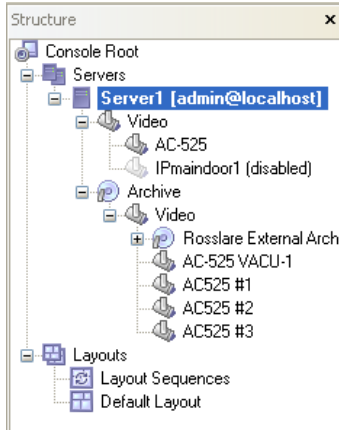


Figure 24: Structure Pane

Right-click the tree view to open the relevant options:

- Console Root**
- Standard Toolbar
 - Screen Arrangement Toolbar
 - Screen Control Toolbar
 - Structure Pane (toggles Structure pane view)
 - Events Pane (toggles Events pane view)
 - PTZ Control Pane
 - Video Adjustment Pane (toggles between viewing and hiding pane)
 - Status Bar

- Servers**
- Add Server (see Adding the Server to the Client on page 22)
 - Remove All Servers
 - Connect All Servers
 - Disconnect All Servers
 - Sort Servers Alphabetically
 - Manage Servers

Available servers sub-menu

Right-click on the server name to view the following options:

- Connect
- Reconnect
- Disconnect
- Refresh

- Tasks: Server Security Setup Wizard, Manage Server Security, Camera Setup Wizard, Video Frame Export Setup Wizard, Open Archive, Manage Watchdogs, Recording Properties, TCP Communication Properties, Automatically discover network video devices, Backup server's archive data
- Remove
- Move Up
- Move Down
- Properties
- **Video** – Right-click to Open Camera Setup Wizard
- **Archive** – Right-click to Open Archive

Layouts

(See Creating Custom Layouts, on page 96)

Right-click to view the following options:

- Save Current Layout
- Manage Layouts
- Deactivate Active Layout Sequence
- Manage Layout Sequences

3.6 Display Pane

The display pane shows all items within the structure pane selected element.

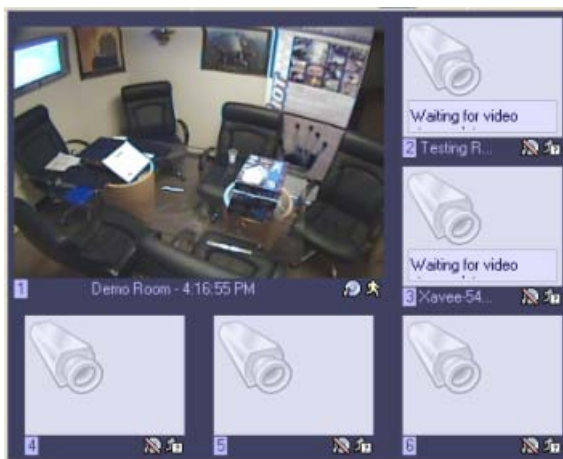


Figure 25: Display Pane

Right-click on any of the displayed views to enable features such as:

- Video Stream
- Video Transfer
- Point to Pan-Tilt-Zoom
- Digital Pan-Tilt-Zoom
- Show Detected Motion
- Freeze
- Current Frame Subtitles
- Copy Current Frame to Clipboard
- Save Current Frame As ...
- Open Archive ...
- Screen Arrangement
- Maintain Aspect Ratio
- AC-525 Properties
- Motion Detector Properties

3.7 Events Pane

In this pane you can view a time and date record of server-client connection.



3.8 Server Configuration

Now that you are a little more familiar with the software's main window, you are ready to configure the server.

In this section you learn how to check and modify:

- Recording Properties
- Server Communication Properties
- Server Watchdog
- Server User Management

3.8.1. Recording Properties

View and modify the hard drive space used by AS-525AV ViTrax software.

To display recording properties:

1. From the structure pane, right-click the server name.
2. Select **Tasks** → **Recording Properties**. The Recording Properties dialog box opens.

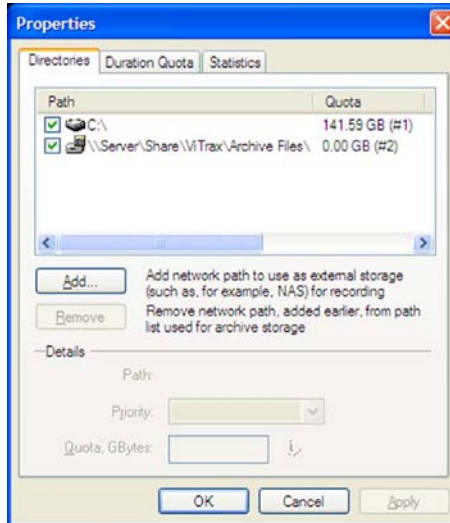


Figure 26: Recording Properties Dialog Box – Directories Tab

The **Directories** tab displays the available hard drive space and allows you to make modifications:

- **Path** – When you check and highlight either drive, the **Details** option below becomes available for further data entry. Do not check the drive C checkbox to avoid using it for storage. If you only want a small portion of the C drive to be used, define how much in the **Details** option.
- **Add** – This button allows you to add external storage addresses for recording such as sharing on the remote computer or NAS drive.
- **Remove** – This button removes currently selected network storage path.
- **Path** – Displays selected path.
- **Priority** – This option allows you to choose which of the drives records first. You must first check and then highlight (by clicking one time) the drive you want to customize in this portion.

- **Quota** – This option allows you to select the amount of space you would like to designate for storage on that particular hard drive. Never choose 100% for the C drive. This may cause your machine to eventually crash due to not enough available virtual memory.
3. Click **Apply** to save the settings.
 4. Click the **Duration Quota** tab, which is used to set global duration quota on all media devices and storage drives.

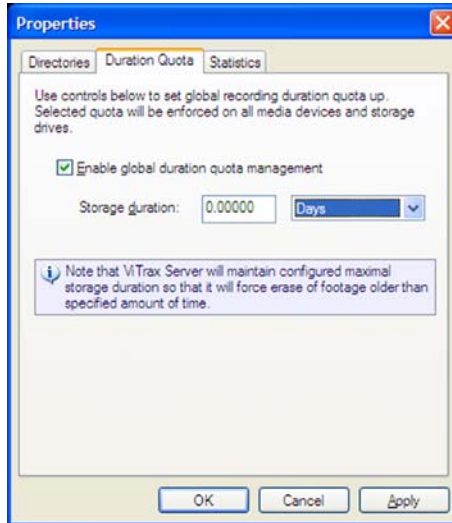


Figure 27: Recording Properties Dialog Box – Duration Quota Tab

5. Click the **Statistics** tab, which displays the used space and available space left on the hard drives being used by AS-525AV ViTrax software.

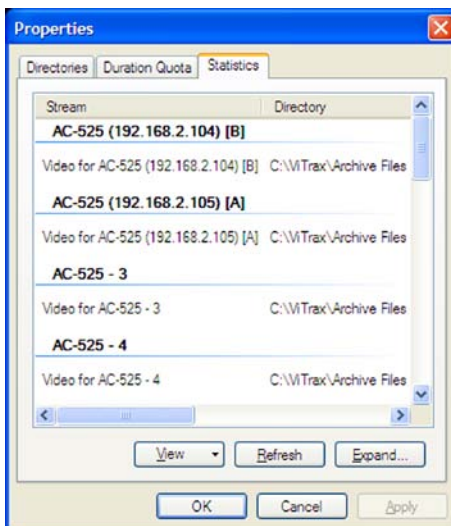


Figure 28: Statistics Tab

6. Click **View** to enable Stored Streams by Source or Stored Streams by Location.
7. Click **Refresh** at any time for an updated list.
8. Click **Expand** to view the Archive Total on a larger screen.
9. Click **OK** to save the settings and return to the Recording Properties dialog box.

3.8.2. Server Communication Properties

View and modify who is connected to the server.

To open the server communication properties box:

1. From the structure pane, right-click on the server name.
2. Select **Tasks** → **TCP Communication Properties**. The TCP Communication Properties dialog box opens.

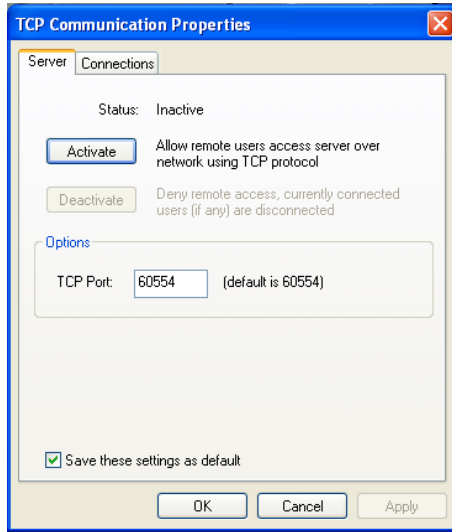


Figure 29: TCP Communication Properties – Server Tab

3. Click the **Server** tab to display the server status.
 - **Activate** – This button allows remote users access server over network using TCP protocol
 - **Deactivate** – This button denies remote access to currently connected users
 - **TCP Port** – Default is 60554
 - **Save these settings as default** – Check if you want the new settings to be the default settings
4. Click **Apply** to save the settings.
5. Click the **Connections** tab to show who is connected to your server. The IP address, user name, and connection time can all be seen. Click **Refresh** at any time for an updated list.
6. Click **OK** to save the settings and to close the window.

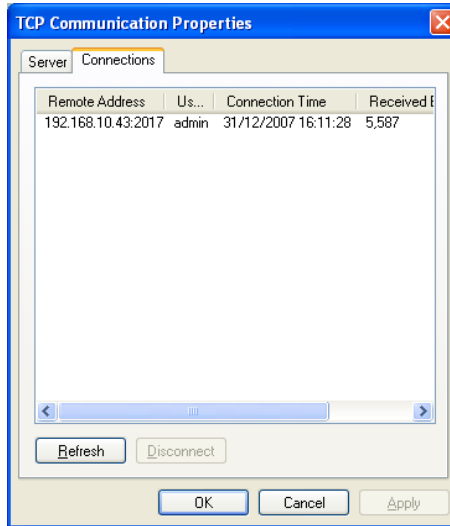


Figure 30: TCP Communication Properties –Connections Tab

3.8.3. Server Watchdog

The server watchdog performs an important operation, protecting the software from improperly working due to system problems. Configuring the watchdog is not necessary if you chose to enable it during installation. However, if you are having frequent restarts or for maintenance adjusting, you may choose to manually configure the watchdog.

To configure the watchdog:

1. From the structure pane, right-click on the server.
2. Select **Tasks → Manage Watchdogs**. The Watchdog Management dialog box opens.

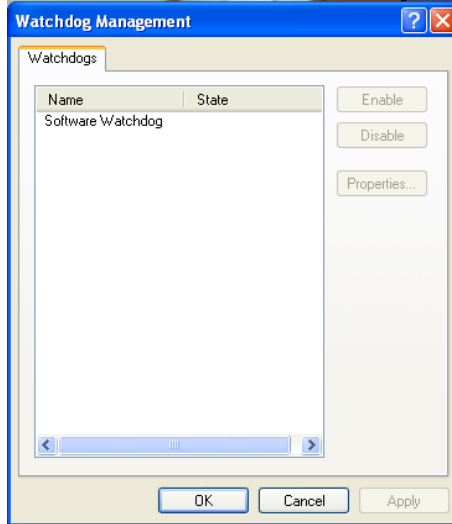


Figure 31: Manage Watchdog Window

3. Highlight Software Watchdog by left clicking one time to activate the **Enable**, **Disable**, and **Properties** buttons.
4. Click **Properties**. The Software Watchdog Properties dialog box opens.

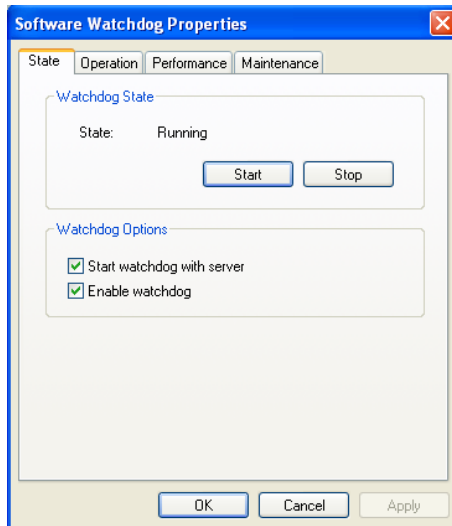


Figure 32: Watchdog Properties– State Tab

5. Click the **State** tab to stop or start running the watchdog.

6. Under the **Watchdog Options**, you have the options to start the watchdog with server and to enable the watchdog by checking the checkboxes.
7. Click **Apply** to save the settings.
8. Click the **Operation** tab to configure the reboot action.

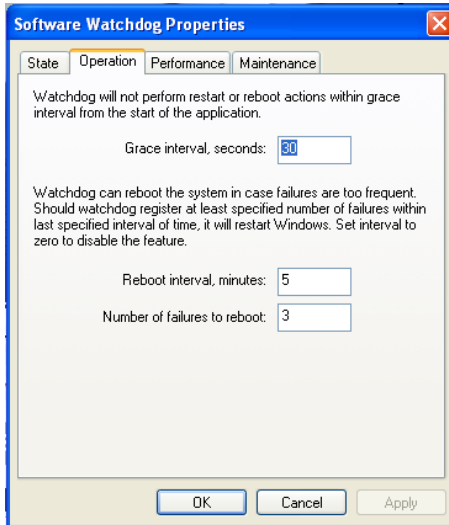


Figure 33: Watchdog Properties– Operation Tab

9. In the **Operation** tab, type the amount of time in seconds for the grace interval, the amount of time for the Reboot interval, and the number of failures before the device reboots.
10. Click **Apply** to save the settings.
11. Click the **Performance** tab to configure which environment performance counters and variables determine the necessity of a server or system restart. The watchdog attempts to restart the server or system after exceeding any specified threshold.

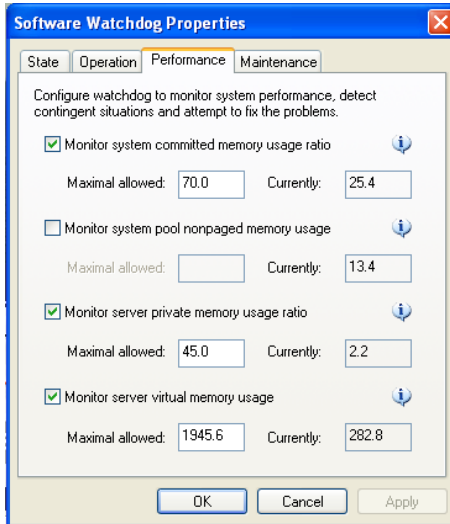


Figure 34: Watchdog Properties– Performance Tab

In the **Performance** tab, you select the following options by checking them:

- Monitor system committed memory usage ratio
 - Monitor system pool non-paged memory usage
 - Monitor server private memory usage ratio
 - Monitor server virtual memory usage
12. Click **Apply** to save the settings.
 13. Click the **Maintenance** tab to set the restart.

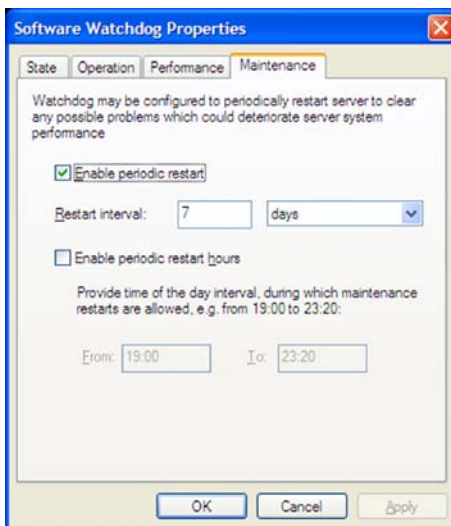


Figure 35: Software Watchdog Properties Window – Maintenance Tab

It is recommended you check the **Enable periodic restart** checkbox. Enabling this feature restarts the Server application at times specified. You can also define the hours when the periodic restart will occur by checking the Enable periodic restart _hours and set the time frame using the text boxes to enter the desired hours.

14. Click **OK** to save the settings and to close the window.



Note:

It is recommended to restart the Server Application to refresh system resources. The watchdog server restart goes virtually unnoticed by the user.

3.8.4. Server User Management

Manage the server user permissions through the Server Security Wizard. This wizard guides you step-by-step to add, remove, or modify user permissions.

To access the server security wizard:

1. From the structure pane, right-click on the server.
2. Select **Tasks** → **Server Security Setup Wizard**. The Server Security Setup Wizard dialog box opens.
3. Click **Next**.
The User Choice dialog box opens.

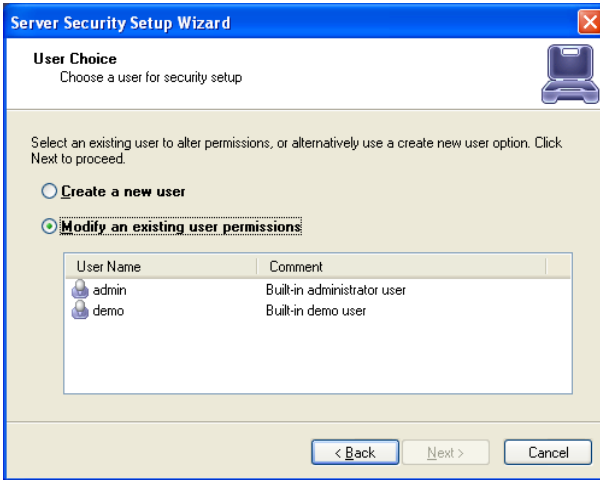


Figure 36: Server Security Setup Wizard

4. Click **Create a new user** to create a new user.
5. Click **Modify an existing user permissions** to modify an existing user permission.
6. Click **Next** to continue the setup. Make sure to be on the user you want to use when you proceed. The User Details window opens.

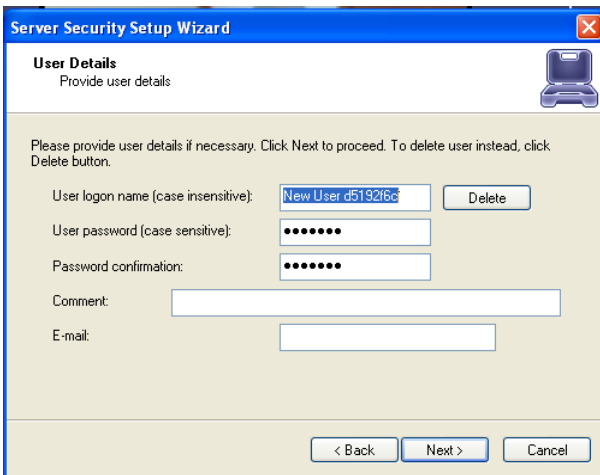


Figure 37: User Details Window

7. The **User logon name (case sensitive)** should display the user for this setup wizard. Write a **User password (Case**

sensitive) and rewrite it under **Password confirmation**. You have the option to add comments or an E-mail address of the user before continuing.

8. Click **Next** to proceed with the setup wizard. The System Permission window opens.

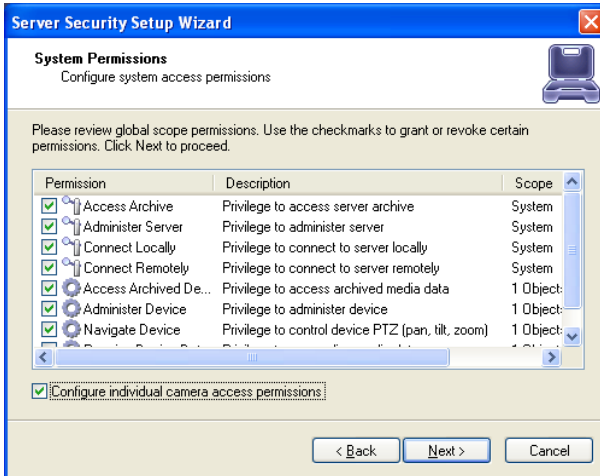


Figure 38: System Permissions Window

9. Server administrators can grant or revoke certain permissions on a camera-by-camera basis by checking the **Configure individual camera access permissions** checkbox.
10. Click **Next** to proceed to the next screen. The Device Permissions window opens.



Note:

The following window, the **Device Permissions** window, only appears if you check the Configure individual camera access permissions checkbox. Otherwise, it skips to the **Action Summary** window.

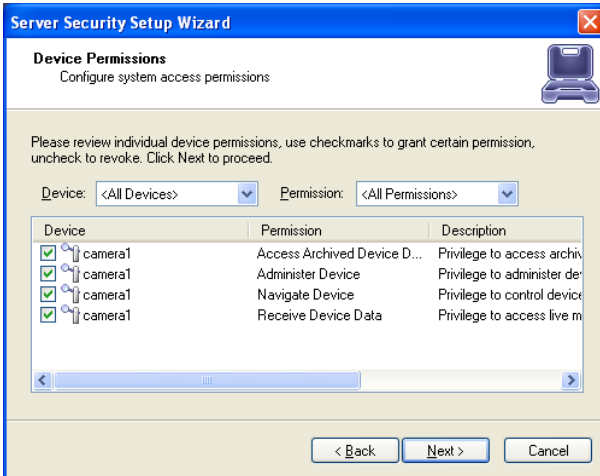


Figure 39: Device Permissions Window

11. After reviewing the device permissions list, check the devices in order to grant permission and uncheck the devices in order to revoke permission.
12. Click **Next** to proceed to the next screen. The Action Summary window opens.

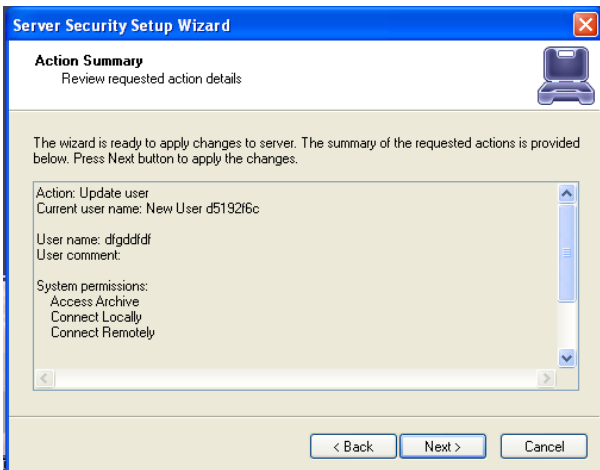


Figure 40: Action Summary Window

13. This window allows you to review the requested action details before you finish the setup wizard. Click **Next** to continue.

**Note:**

After you click Next in this window, you can no longer click Back in the setup wizard. Be certain when you review the Action Summary that it is all correct.

14. Click **Finish** to close the wizard or check **Continue with setting up other permissions** to continue this setup wizard for a different user.

4. Configuring Cameras

You are now ready to set up the cameras. AS-525AV ViTrax supports the AC-525 connection (in which you can connect your cameras), and network (IP) cameras (web cameras).

This chapter explains how to set up the cameras and how to configure each camera via the ViTrax Camera Setup Wizard in order to record video from this camera and for motion detection. The panel in the ViTrax software supports two cameras.

The Camera Setup wizard helps you assign names for each camera, adjust the cameras properties (like frame size, etc), setup motion detector and event alert options and recording settings.

AS-525AV ViTrax is compatible with the following cameras:

- AC-525 connection
- Network IP cameras and video servers

**Note:**

Refer to the AC-525 Hardware manual for details regarding compatible cameras and for instructions on the installation process of the AC-525.

4.1 Setting up AC-525 Connection

You are now ready to configure the AC-525 to work with AS-525AV ViTrax. Each panel supports two cameras.

4.1.1. Configuring through the Camera Setup Wizard

This section explains how to configure each AC-525 to enable video recording and for motion detection.

To configure the AC-525:

1. From the structure pane, right-click on the server.
2. Select **Tasks** → **Camera Setup Wizard**. The Camera Setup Wizard dialog box opens.
3. Click **Next**.
The Camera choice dialog box appears.



Figure 41: Camera Setup Wizard Window

4. From the first window in the wizard select either to either add a new device or modify an existing one.
5. Click **Next** to continue to the next screen. The Camera device properties window opens.

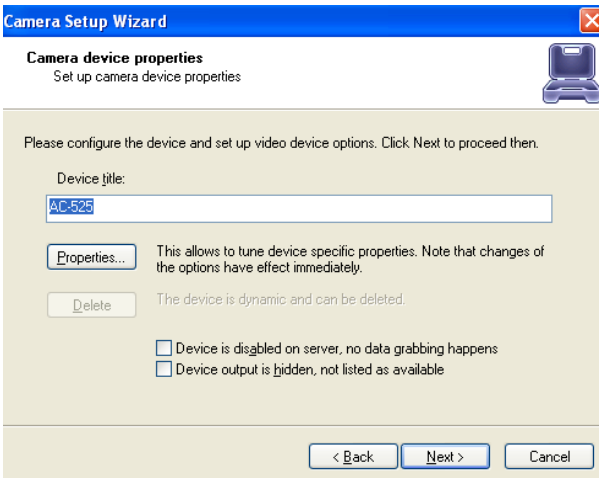


Figure 42: Camera Device Properties Window

6. In **Device Title**, type the name of device you are adding.
7. Click **Properties** to set device specific properties.

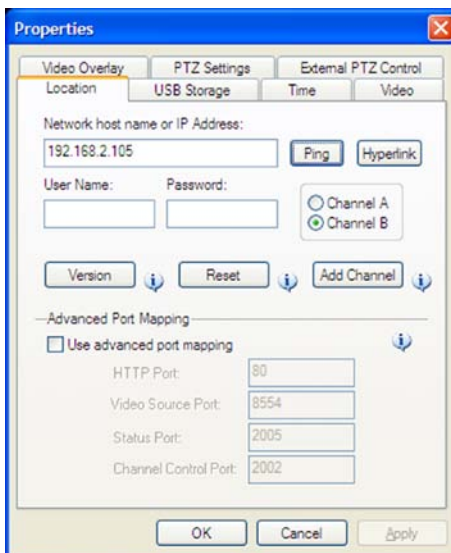


Figure 43: Camera Setup – Properties – Location Tab

8. Click the **Location** tab to enter the AC-525's IP address.
 - Click **Ping** to ping the AC-525's selected IP Address.
 - Select Channel A or Channel B.
 - Enter the required User Name in the User Name text box
 - Enter the required Password in the Password text box
 - Click **Version** to view the AC-525's firmware version
 - Click **Reset** to reset the AC-525's video board, this affects both channels A and B
 - Click **Add Channel** to copy the settings to an additional channel – this is used to add a second camera to the panel.
 - If the system is located behind a router, use the advanced mapping, check the Use advanced port mapping checkbox and fill all relevant information, contact your network administrator for assistance with the specific settings



Note:

It is strongly advised NOT to connect to the AC-525 web server application (see the AC-525 installation manual) while the ViTrax server is connected to the panel.

9. Click **Apply** to save the settings.

10. Click the **USB Storage** tab to see the available USB storage. In this tab you can also clear the USB association by clicking on **Clear USB**.

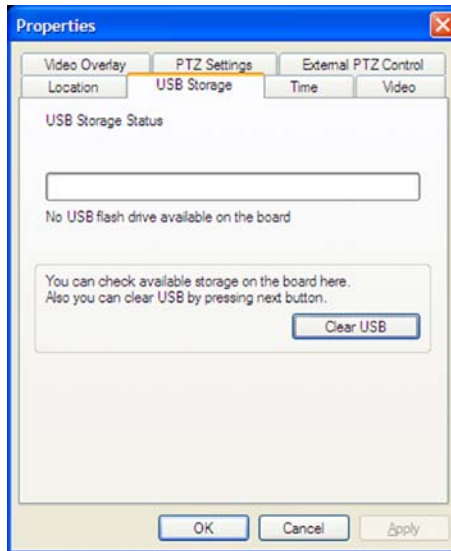


Figure 44: Camera Setup – Properties –USB Storage Tab

11. Click the **Time** tab to set the panel's time and date.

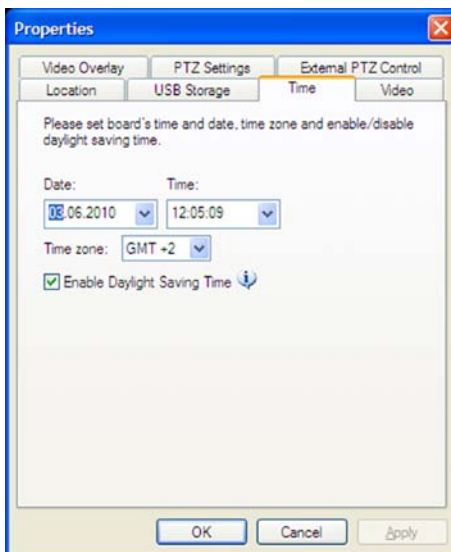


Figure 45: Camera Setup – Properties – Time Tab

- Use the Date select box to pick the correct date
- Use the Time select box to pick the correct time
- Select the time zone using the time zone select box
- Enable or disable daylight savings by checking / unchecking the Enable Daylight Savings Time checkbox



Note:

Daylight savings is not an automatic feature and requires that you change it when applicable manually.

12. Click **Apply** to save the settings.
13. Click the **Video** tab to set video resolution, video stream, frame rate, and bit rate and to set the support of either both cameras or only one of them, this setting depends on the camera installation and requirements.

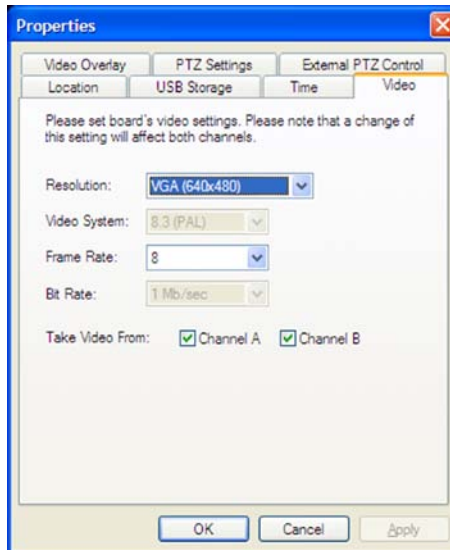


Figure 46: Camera Setup – Properties – Video Tab

14. Click the **Video Overlay** tab to define texts, date and time textual overlays and the way they appear on the video footage.

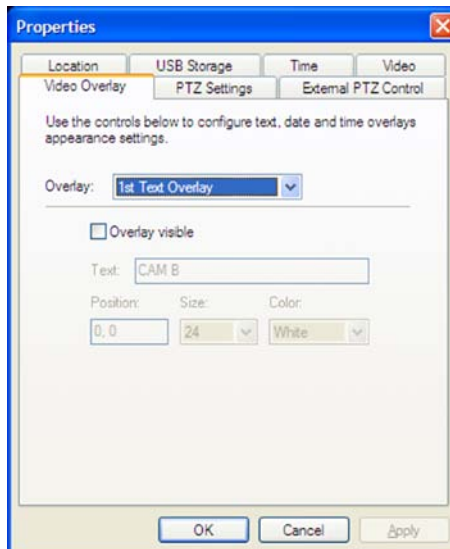


Figure 47: Camera Setup – Properties – Video Overlay Tab

- Click the **PTZ Settings** tab to define the Pan Tilt Zoom protocols, identification, and baud rate, use the advanced port mapping if the system is behind a router.

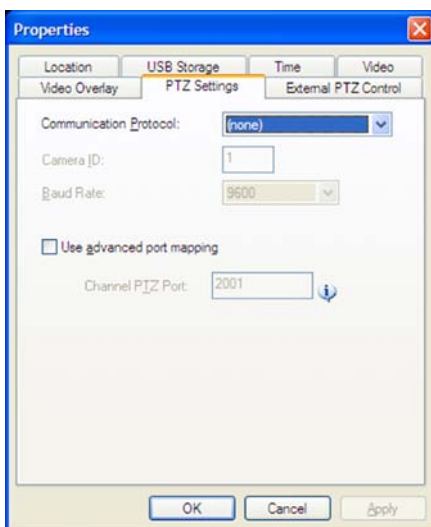


Figure 48: Camera Setup – Properties – PTZ Settings Tab

- Click the **External PTZ Control** tab to define built-in or external PTZ control protocols.

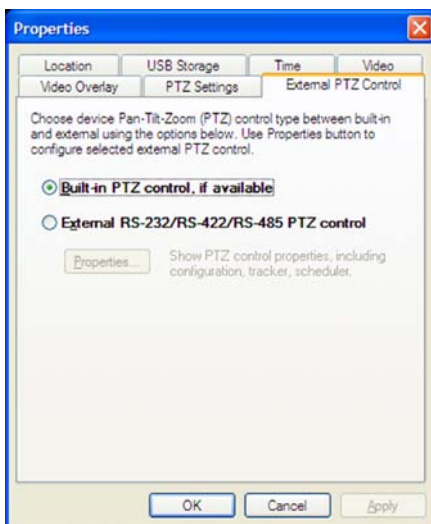


Figure 49: Camera Setup – Properties – External PTZ Control Tab

17. For external PTZ control protocols, click **Properties...** to define the settings:
 - In the General Tab:
 - Set the PTZ protocol using the list of protocols provided in the **Protocol** select box
 - Define the communication settings including the serial port, port speed, and device identifier.

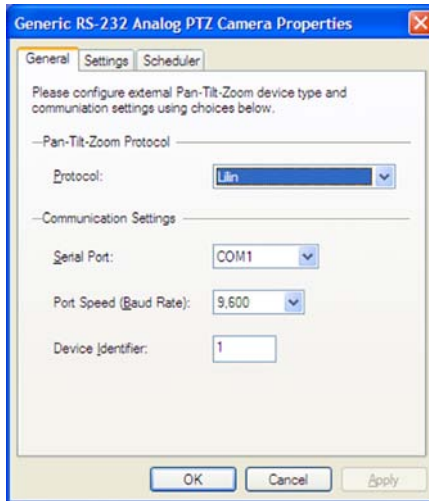


Figure 50: External PTZ Control Properties – General Tab



Note:

For AC-525 integration, the communication protocol must be set to "Pelco D" and the device identifier must be set to "1".

- In the Settings Tab:
 - Activate the auto tracker function using the On / Off buttons
 - Activate backlight compensation feature using the On / Off buttons
 - Activate the Electronic Shutter feature using the On / Off buttons
 - Activate the automatic white balance feature using the On / Off buttons
 - You can also access the camera's menu as well as reset the settings back to factory defaults

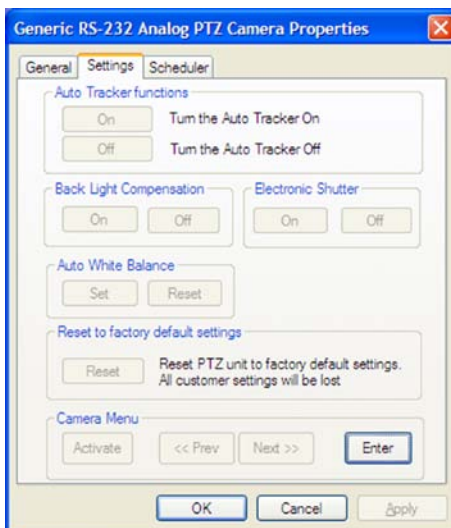


Figure 51: External PTZ Control Properties – Settings Tab

- In the Scheduler Tab:
 - Activate the scheduler feature to automatically turn the tracking feature on and off
 - Schedule the times for activation and deactivation of the *Tracker On* and *Tracker Off* features

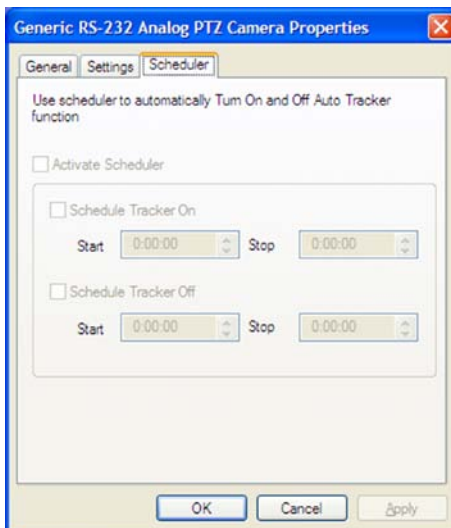


Figure 52: External PTZ Control Properties – Scheduler Tab

- Click **Apply** and then **OK** to save the settings and return to the Camera device properties box.
- Click **Next** to continue with the Camera Setup Wizard. The Video compression window opens.

**Note:**

Video compression setting is optional and can also be accessed from the video transfer window, see [Enabling Video Transfer](#), on page 94.

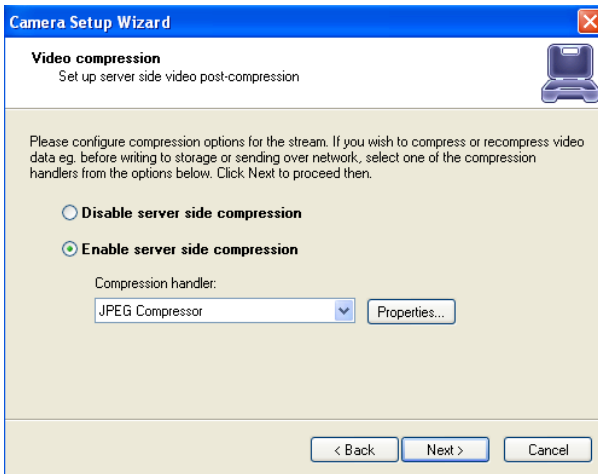


Figure 53: Video Compression Window

This option allows you to compress video data. Disable or enable server side compression.

After selecting a Compression handler from the dropdown menu, click **Properties**. The JPEF Compressor Properties window opens.

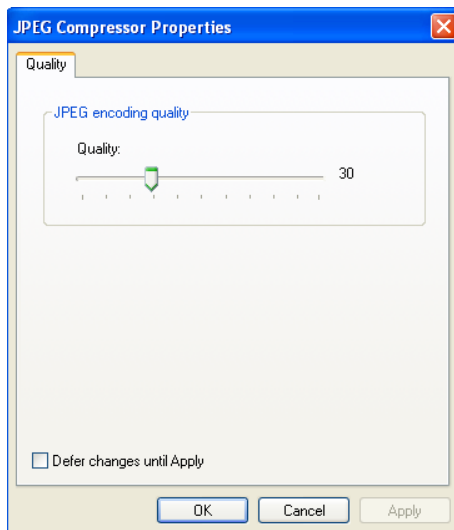


Figure 54: JPEG Compressor Properties

20. Drag the handle on the Quality slider either left or right to adjust the quality of the JPEG compression.
Click **OK** to return to the Video compression window.
21. Click **Next**. The Motion analysis window opens.

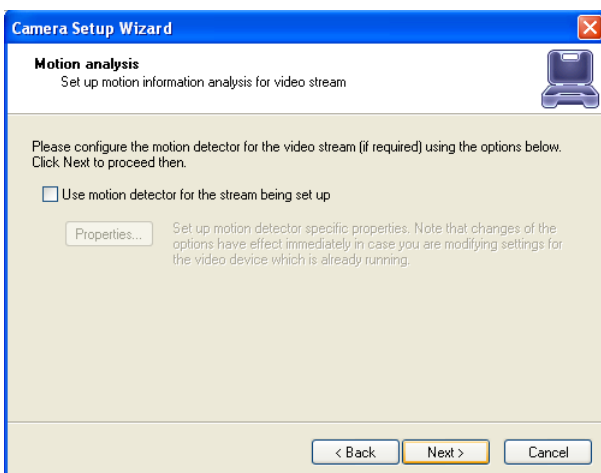


Figure 55: Motion Analysis Window

If motion analysis is required, check **Use motion detector for stream being set up**.

Then click **Properties** to make the desired settings. The Properties window opens.

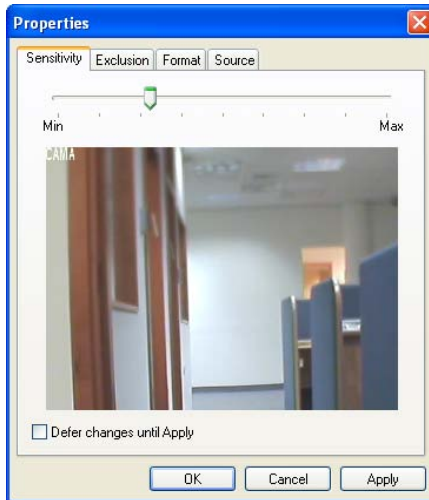


Figure 56: Sensitivity Tab

22. Click the **Sensitivity** tab to adjust the motion detection sensitivity.

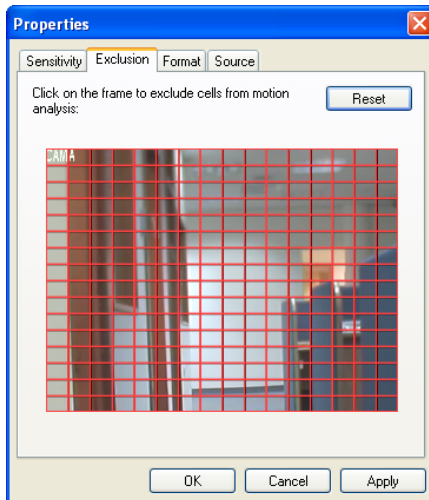


Figure 57: Exclusion Tab

23. Click the **Exclusion** tab and select which cells you want excluded from motion detection.

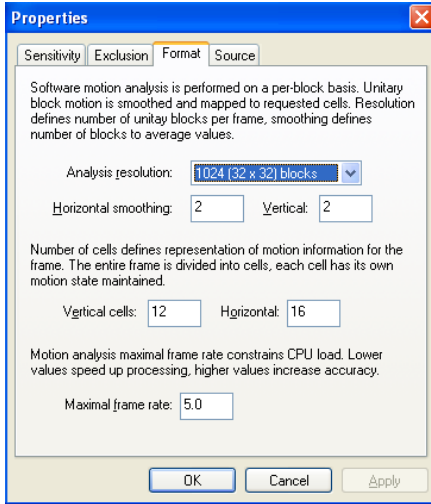


Figure 58: Format Tab

- Click the **Format** tab to select desired resolution, motion smoothing, and motion in each cell of a frame.



Note:

The higher the motion detection frame rate, the slower the CPU processing.

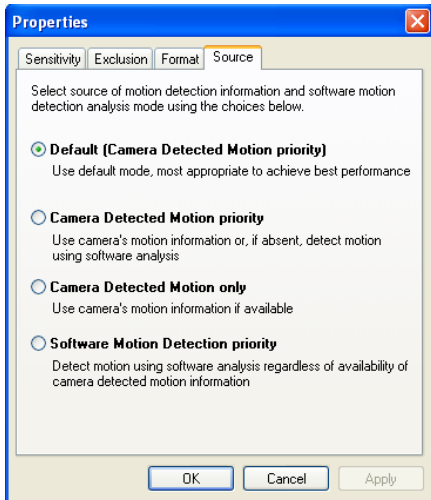


Figure 59: Source Tab

- Click the **Source** tab to select the source of motion detection information and software motion detection

analysis. Click **OK** to save the settings and return to the Motion analysis window.

26. Click **Next**. The Data recording window opens.

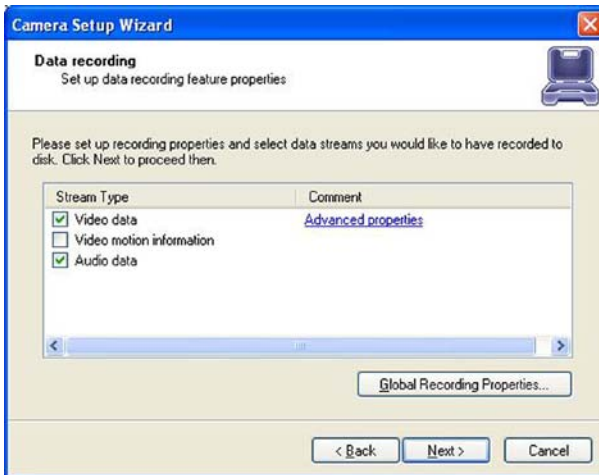


Figure 60: Data Recording Window

This screen allows you to set up data recording properties. Check **Audio data** and / or **Video data** and click **Advanced properties** for advanced video data properties.



Note:

Audio data is separated from the video, enabling the audio data will save audio data at all times, even with no video data recorded. This requires additional storage space.

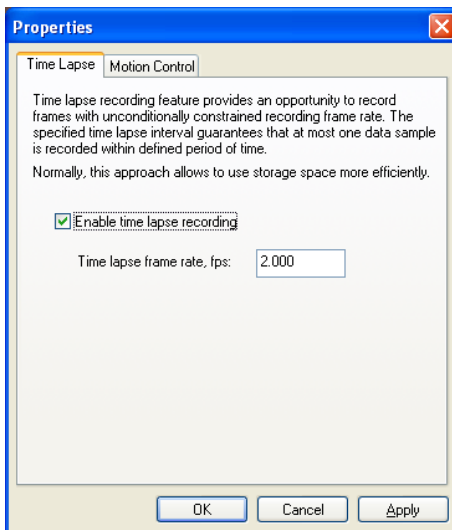


Figure 61: Time Lapse Tab

27. Click the **Time Lapse** tab. Check **Enable time lapse recording** if you want to record frames with unconditionally restrained recording frame rate.
Enter the desired frame rate per second (fps).

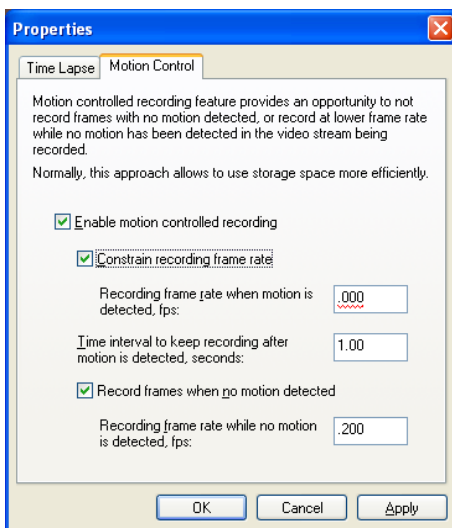


Figure 62: Motion Control Tab

28. Click the **Motion Control** tab to not record frames with no motion detected. Check **Enable motion controlled recording** and enter the desired settings.
Click **OK** to save the settings and return to the *Data recording window*.
29. To change the global recording properties:

**Note:**

The Global setting should not be changed every time a camera is being set up. These options are normally determined when setting up a new server. Changes done here will affect all the cameras and devices defined in the system.

- Click **Global Recording Properties...** button, see Figure 60, on page 69.

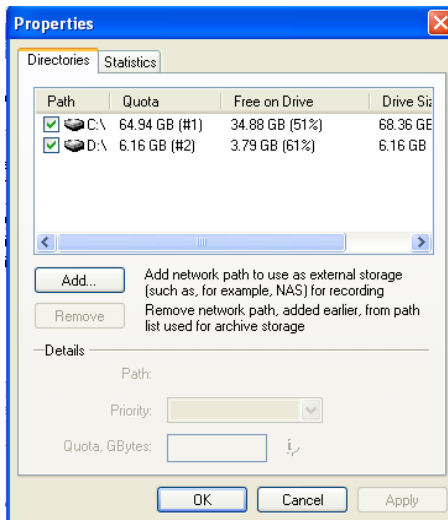


Figure 63: Directories Tab

- Click the **Directories** tab to select the desired network path to use as external storage.

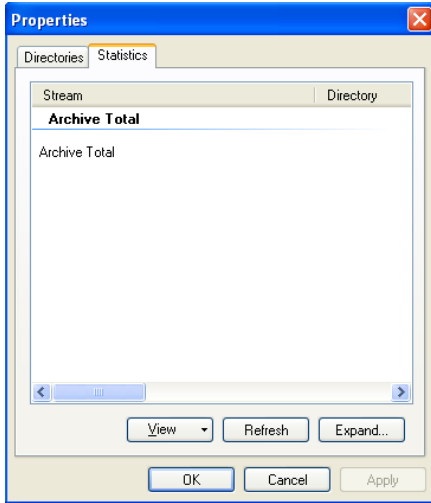


Figure 64: Statistics Tab

- Click the **Statistics** tab to view the archive total.
 - Click **View** to select viewing the stored streams by source or location.
 - Click **Refresh** to refresh the screen.
 - Click **Expand** to maximize the size of the window.
 - Click **OK** to save the settings and return to the Data recording window.

30. Click **Next**. The Action summary window opens.

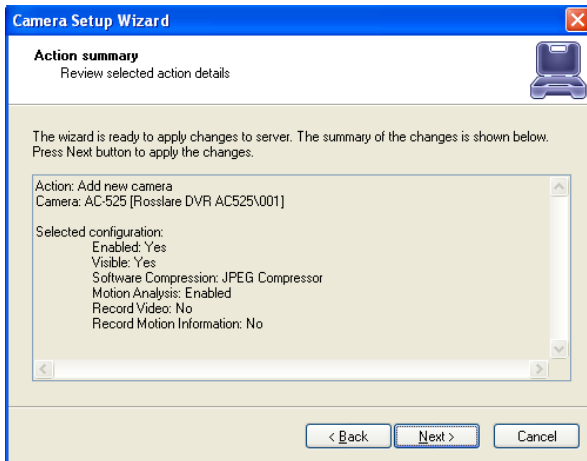


Figure 65: Action Summary Window

This screen displays the selected settings. This is the last opportunity to change the settings.

Click **Back** to change the settings.

31. Click **Next** to complete the Camera Setup Wizard.
32. When the Wizard Completion window opens, click **Cancel** to exit the Camera Setup Wizard if you do not want to preserve any of the settings
Or
Click **Finish** to exit the Camera Setup Wizard or check **Continue with setting up another camera to continue this setup wizard for a different camera.**

4.2 Network IP Cameras

A network IP camera is a digital camera that can be directly connected to the Internet using cables or WiFi connection.

Network (IP) camera installations are highly scalable and upgradeable. There is no need to buy and install additional video capture boards for the AC-525 system in the event you want to add a camera or increase performance of the system. There are two ways of setting up a network IP camera to work with the AS-525AV ViTrax:

- Let the software find the cameras automatically
- Manually input all of the camera's IP information

4.2.1. Configure the IP Cameras Automatically

Configuring the IP camera automatically using the step-by-step Network Scan Wizard, is the most reliable and convenient way to configure the IP camera.

To configure the IP camera automatically:

1. From the structure pane, right-click on the server.
2. Select **Tasks → Automatically discover network video devices...** The Network Scan Wizard dialog box opens.

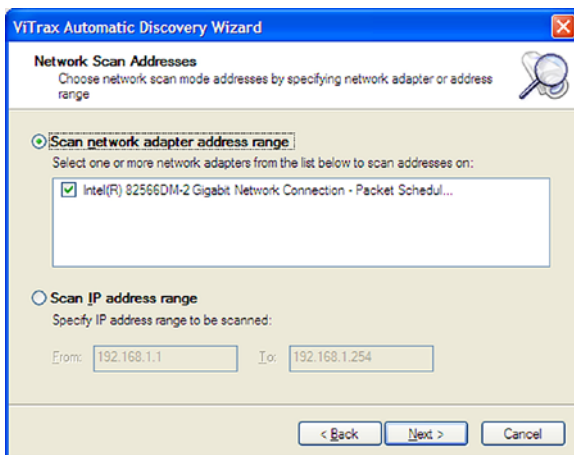


Figure 66: Automatic Discovery Wizard - Network Scan Addresses

3. Select **Scan network adapter address range** and check the available network adapter(s).
Or
If you know the networks IP range, search by the **Scan IP address range** option for the cameras.
4. Click **Next** to continue setting up the IP camera. The Network Scan Ports window opens.

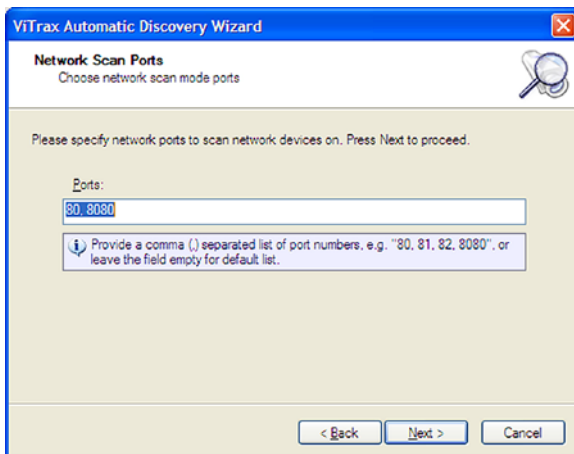


Figure 67: Automatic Discovery Wizard - Network Scan Ports

5. Set the TCP ports that may be in use with IP cameras. Click **Next** to continue. The Network Scan Credentials window opens.

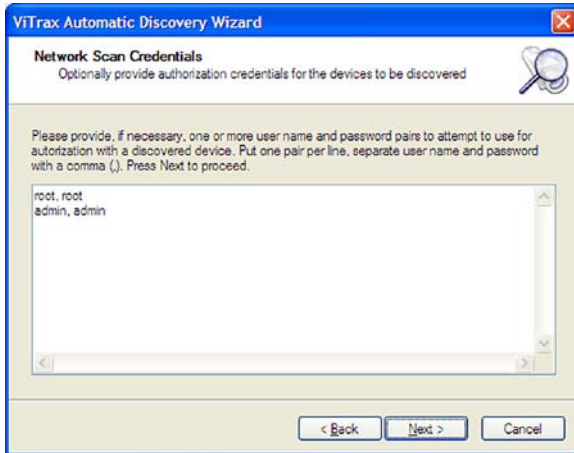


Figure 68: Automatic Discovery Wizard - Network Scan Credentials

6. Provide authorization credentials, User Name and password separated by a comma, to access password protected network IP's.
7. Click **Next** to begin the network scan. Once the scan is complete the Preview Devices window opens. Select the desired camera and Click **Next**. You can also access the camera IP properties, which includes the camera name, model and make and channel definition, by clicking the **Properties** button.

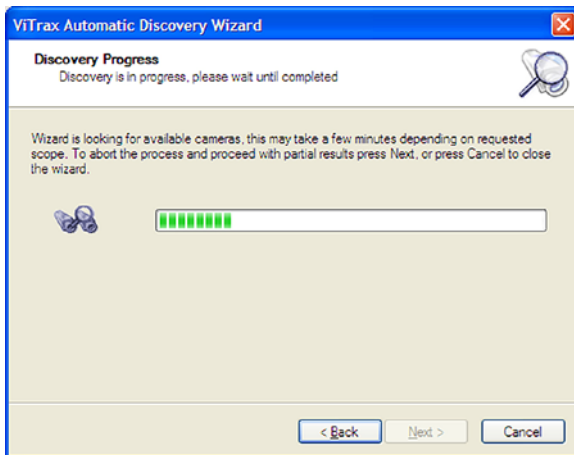


Figure 69: Automatic Discovery Wizard – Discovery Process

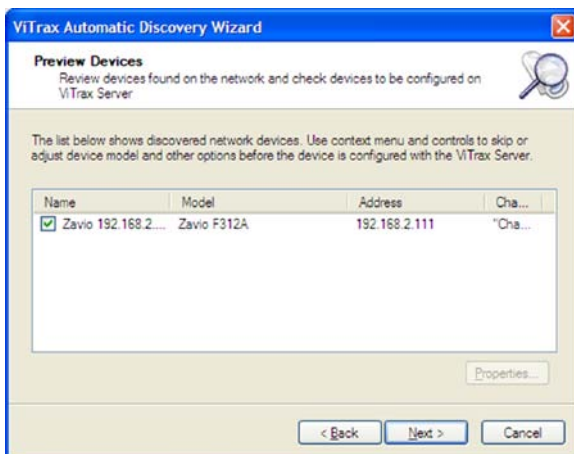


Figure 70: Automatic Discovery Wizard – Preview Devices

8. The Configured devices window opens, click **Properties** to access the detailed attributes of the camera. Click **Next** to continue. For more on the specific camera properties contact your camera manufacturer.



Note:

The property window differs between different cameras.

9. The Wizard completed window opens. Click **Finish** to finish the installation and setup and exit the wizard..

4.2.2. Configure the IP Cameras Manually

Through the Camera Setup wizard, you can add and configure the IP cameras manually.

To configure the IP camera manually:

1. From the structure pane, right-click on the server.
2. Select **Tasks → Camera Setup Wizard**. The Camera Setup Wizard dialog box opens.

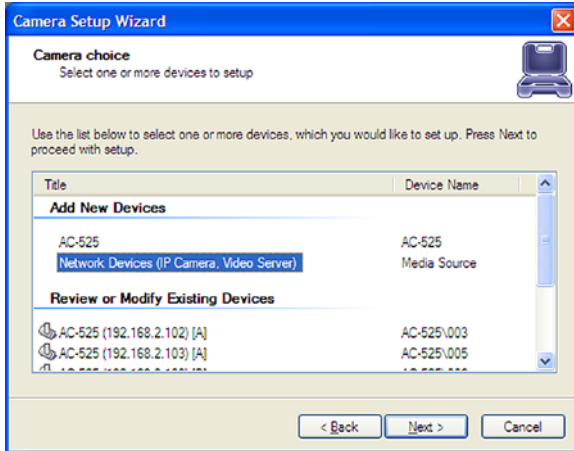


Figure 71: Camera Setup Wizard Window

3. From the first window in the wizard under Add New Devices select **Network Devices (IP Camera, Video Server)**.
4. Click **Next** to continue to the next screen. The Camera device properties screen opens.

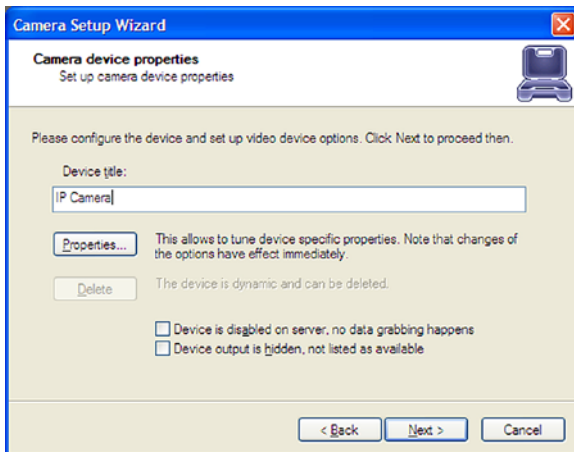


Figure 72: Camera Setup Wizard

5. In **Device Title**, type the name of the name of the camera you are adding.
6. Click **Properties** to set device specific properties.

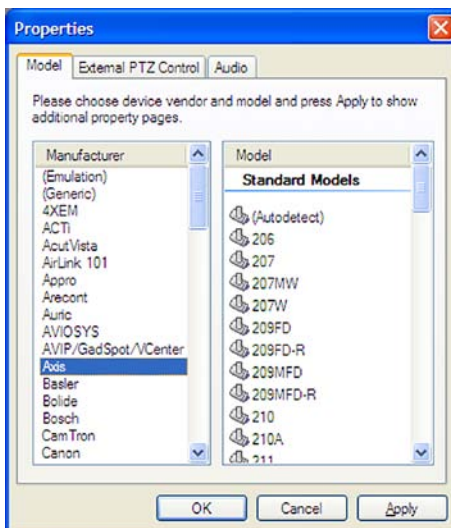


Figure 73: Device Properties

7. From the Manufacturer list select the Camera's manufacturer and then the corresponding model in the Model list. Click **OK**, the detailed properties window opens.
8. Enter the devices access information and all other relevant properties and settings. For more on the specific camera properties contact your camera manufacturer.



Note:

The property window differs between different cameras.

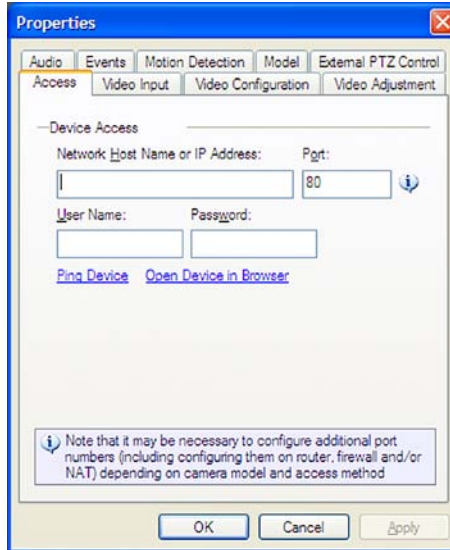


Figure 74: Detailed Device Properties

9. Click **Apply** to save your settings.

5. Setting System Options

You can modify the system's options for AS-525AV ViTrax such as the screen options, screen mapping, miscellaneous, exclusivity, and sound options.

To set system options:

1. From the **File** menu bar, click **Tools → Options**. The Options window opens.

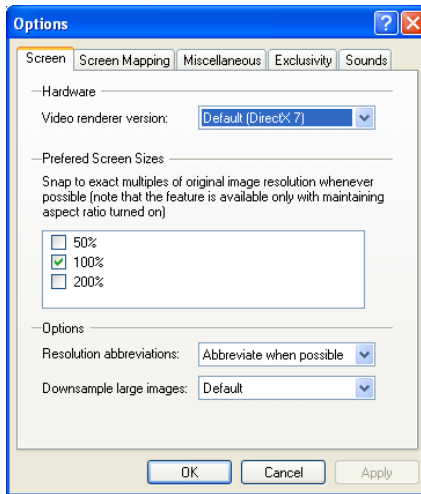


Figure 75: Screen Tab

5.1.1. Screen Tab

1. With the **Screen** tab selected, select the following screen options:

Video renderer version	<ul style="list-style-type: none"> • Default (DirectX 7) • DirectX 9 • DirectX7 • Legacy DirectX • GDI
Preferred Screen Size	50%, 100%, 200%
Resolution abbreviations	<ul style="list-style-type: none"> • Abbreviate when possible • Don't abbreviate

Downsample large images

- Default
- Disabled
- Enabled, Favor Quality
- Enabled, Favor Speed

2. Click the **Screen Mapping** tab to define camera to screen mapping.

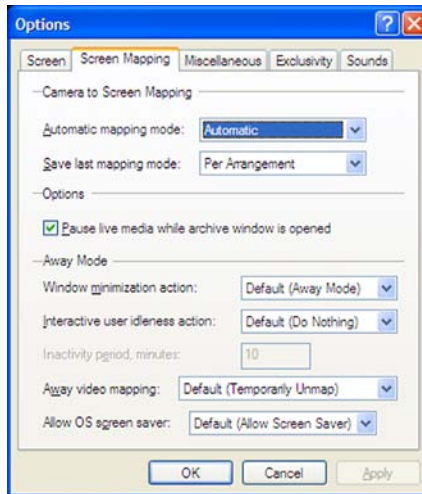


Figure 76: Screen Mapping Tab

5.1.2. Screen Mapping Tab

1. With the **Screen Mapping** tab selected, select the following screen options:

Automatic Mapping mode

- Automatic – camera is mapped to screen automatically
- Disabled

Save Last Mapping Mode

- Per Arrangement
- Automatic
- Disabled

Pause live data while archive window is opened

It is recommended you check this option

- Click the **Miscellaneous** tab to set application options and structure pane options.

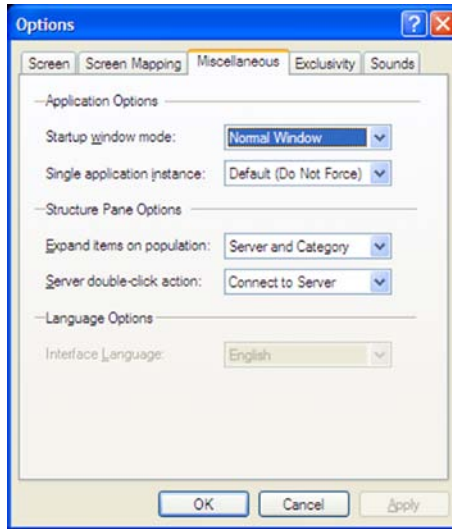


Figure 77: Miscellaneous Tab

5.1.3. Miscellaneous Tab

- With the **Miscellaneous** tab selected, select the following screen options:

- | | |
|-----------------------------------|---|
| Startup window mode | <ul style="list-style-type: none"> • Normal Window • Always Full Screen |
| Expand items on population | <ul style="list-style-type: none"> • None • Server • Server and Category |
| Server double-click action | <ul style="list-style-type: none"> • Connect to Server • Show Properties |

- Click the **Exclusivity** tab to set exclusivity rights, passwords, and startup options.

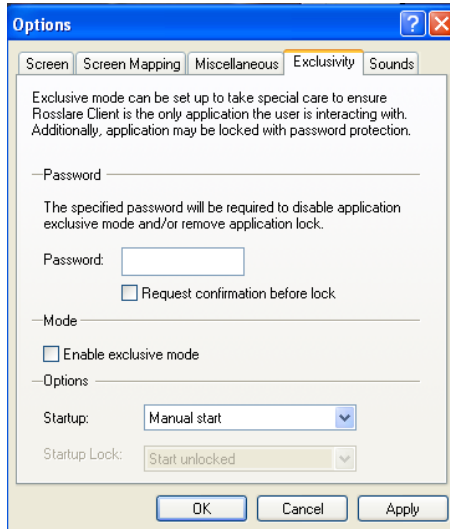


Figure 78: Exclusivity Tab

AS-525AV ViTrax includes safety features that prevent human error by allowing access to AS-525AV ViTrax. These features include:

- Exclusivity Mode (Windows lock out feature)
- Lock Application

5.1.4. Exclusivity Tab

1. With the **Exclusivity** tab selected, select the following screen options:

- Password**
- Type in any password
 - Check whether you want to **Request confirmation before lock**.
 - As you type in the password, **the Startup Lock** will not be grayed out.

Enable exclusive mode By enabling the exclusive mode, you can only use the computer for surveillance purposes and cannot use the internet or other programs.

- Startup**
- Manual start
 - Automatic with any user logon
 - Automatic with current user logon

- Startup** • Start unlocked
- Lock** • Start locked

The exclusivity mode is a safety feature that prevents the user from having access to Windows operating system. Enabling this feature allows the user access to AS-525AV ViTrax software only. This ensures uninterrupted server operation and stability, eliminating human error. See Lock Application, below.

5.1.5. Sounds Tab

Under the **Sounds** tab, you are able to set the sound .wav files that will indicate the following events:

- Disconnection from Server (Failure)
- Video Source Motion
- Disconnection from Server (Success)
- Connection to Server

You can browse your computer or the internet to add such .wav files.

Make sure to click **Apply** if you have made any changes to the system's options. To exit at any point, click **Cancel**.

5.2 Lock Application

AS-525AV ViTrax Client can be locked to ensure that no one has access to server settings except the administrator. The exclusivity mode password is used to unlock the application.

To enable lock application:

1. From the **File** menu, click **Tools → Lock Application**. The lock application is now enabled.



Note:

A warning window appears when you click **Lock Application** and says "The application will be locked until exclusivity mode password is provided to unlock. Would you like to unlock now?"

The following prompt screen appears.

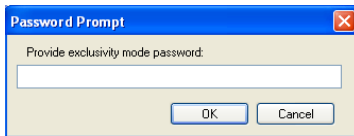


Figure 79: Password Prompt

Setting System Options

2. Type in the same password you already chose in the **Exclusivity** tab. See Exclusivity Tab, on page 83.



Note:

The unlock password prompt window appears and becomes semi-transparent or hidden while the keyboard input is idle. Everything on the screen will be grayed out so that no one can use the computer while you are not present. Start typing the password and the password prompt window reappears on the screen.

3. Click the **Sounds** tab to attach sound files to specific events.

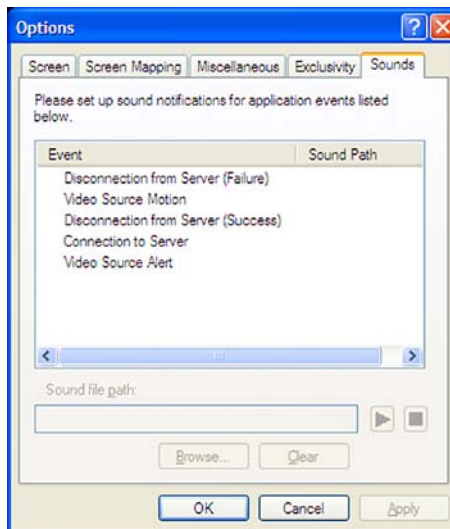


Figure 80: Sounds Tab

6. AS-525AV ViTrax Video Capabilities

Now that the software is installed and the cameras have been configured, you are ready to learn about some of the software's capabilities.

In this chapter, the following features are explained:

- Making Video Adjustments
- Exporting Video Frames
- Enabling Video Transfer
- Creating Custom Layouts
- Map Module Feature
- Archiving Integrity Wizard
- Archiving Backup Wizard
- Playback Video
- Exporting Video

6.1 Making Video Adjustments

Adjust every individual camera with its own settings through the video adjustment feature. The following settings can be adjusted: Brightness, Contrast, Saturation, Sharpness, and Hue

To make video adjustments:

1. Click the Video Amplification icon on the toolbar.



Figure 81: Video Amplification Icon

The Video Adjustment screen opens.

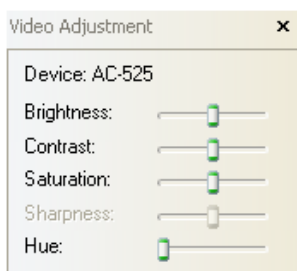


Figure 82: Video Adjustment Screen

2. Slide the handles left or right to adjust the settings

6.2 Exporting Video Frames

The Video Frame Export Setup Wizard allows you to configure continuous saving of video frames on network, fixed storage, or an FTP. Frame exports can be configured for multiple devices. Exported frames are saved in JPEG format using the filename format you specify when configuring the export until disabled.

To run the Video Frame Export Setup Wizard:

1. Right-click on the appropriate server in the structure pane.
Or, Select menu item **Server**→**Selected Server**.
2. Click **Tasks**.
3. In the submenu, click **Video Frame Export Setup Wizard**.
4. When the Welcome to the Video Frame Export Setup Wizard opens.

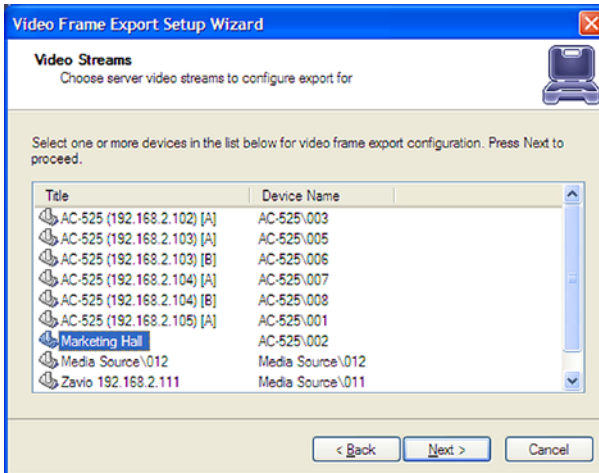


Figure 83: Export Setup Wizard - Video Streams Welcome Window

5. Select one or more devices and click **Next** to continue. The Video Streams Export properties window opens.

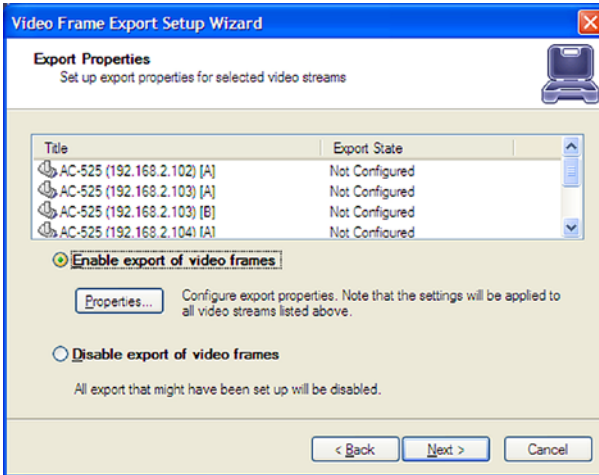


Figure 84: Export Setup Wizard – Export Properties Window

6. Select each of the devices and enable or disable the video frame export.
If you want to enable export, click **Properties** to configure the various properties. The Export Properties window opens.

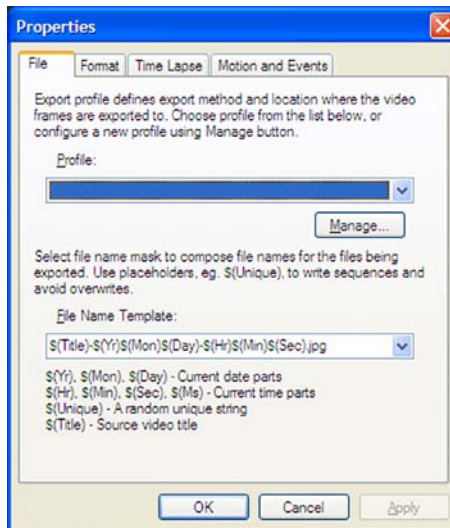


Figure 85: Export Setup Wizard – Properties Popup – File Tab

7. Select an export profile from the list or click **Manage...** to create or edit a profile. Select a file naming template from

the list of file name templates. See ahead Specify Transfer Defaults for Newly Added Devices, on page 96 for detailed explanation. Click the **Format** tab.

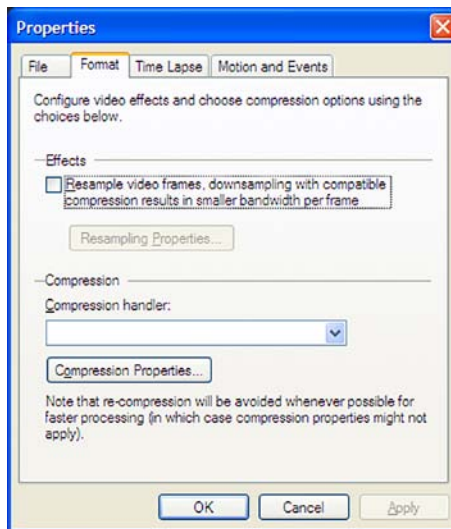


Figure 86: Export Setup Wizard – Properties Popup – Format Tab

8. Check the Effects checkbox to enable video resizing, click the **Resampling Properties** button to define the resizing properties of the exported video. Select the compression handler from the list and click the **Compression Properties...** button to define the level of video compression. Click the **Time Lapse** Tab.

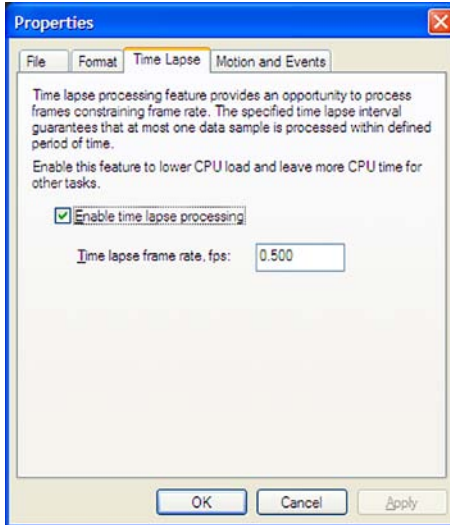


Figure 87: Export Setup Wizard – Properties Popup – Time Lapse Tab

9. Enable Time lapse processing to lower CPU load, set the frame rate, (frames per second). Click the **Motion and Events** Tab.

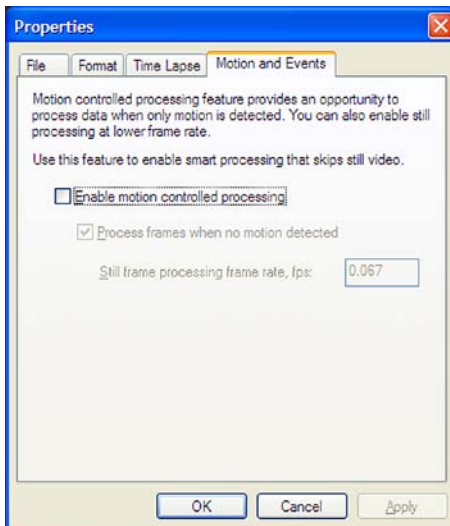


Figure 88: Export Setup Wizard – Properties Popup – Motion and Events Tab

10. Enable or disable Motion and Event controlled video processing (appears if supported by camera). Click **Apply** to save your settings. Click **OK** to return to the Video Streams Export properties window.
11. After you have configured the profiles, continue with the wizard installation. (See Complete the Video Frame Export Setup Wizard, on page 94.)

6.2.1. Configure Profile Properties

The Profile Properties allows you to configure the profile settings to export the video frames.

There are two types of profiles:

- File export—prepares the video frames for export to a file
- FTP export —prepares the video frames for export to an FTP site

There are four tabs in the **Properties** window:

File	Select a profile from available list or configure a new profile using the Manage button
Format	Configure the video effects and compression options.
Time	Process frames while constraining the frame rate.
Lapse	Enable the time lapse to lower the CPU load and leave more CPU time for other tasks.
Motion and Event Control	Motion Control provides an opportunity to process data for when motion is detected or an event occurred.

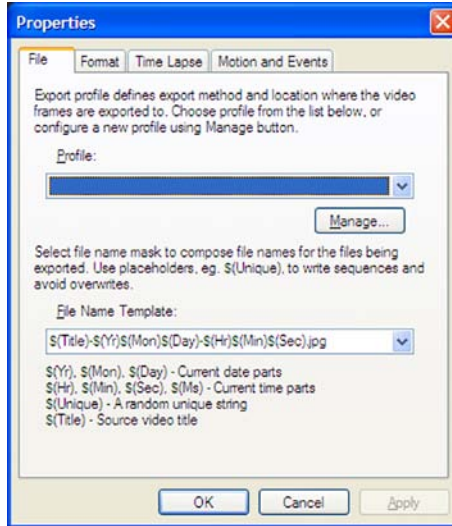


Figure 89: Export Properties Window

1. In the **Profile** area, select an already created profile or create at least one to start using video frame export.
2. In the **File Name Template** area, select a name from the dropdown menu or choose another name.

Each frame is saved in a file with a template string used for formatting the filename.



Note:

Make sure the filename is unique by adding its time in ms or random unique string (\$(Ms) or \$(Unique) format tags).

3. Click the **Manage** button to create, edit, or delete profiles used to export video frames.



Note:

Reconfiguration of a profile affects all video streams the profile is selected for.

The Profiles Property window opens.

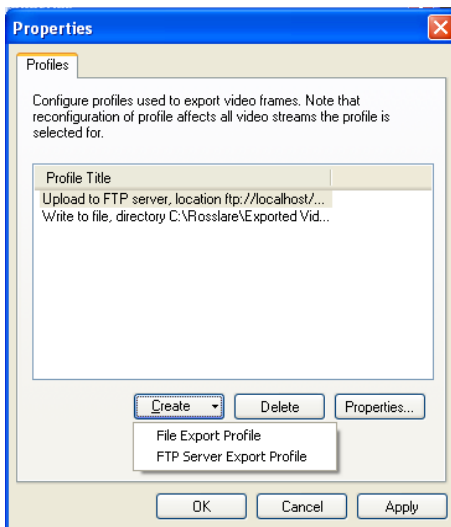


Figure 90: Profiles Properties Window

In the **Profile Title** area, you can edit or delete already created profiles.

4. Click **Create** to open the dropdown menu displaying the export video frames location choice. Choose from the following:
 - File Export Profile
 - FTP Server Profile

File Export Profile

The File Export Profile allows you to export the video frame to a file or directory.

1. Click **File Export Profile**.
2. When the Write to File window opens, specify the desired frame export directory, network storage, or share path in **Directory** or **Browse** for the relevant directory.



Note:

If you are connected remotely, it is important to remember that this is the server side directory.

3. Click **OK** to save the settings and return to the Profiles Properties window.

FTP Server Export Profile

The FTP Server Export Profile allows you to export the video frames to an FTP site.

1. Click **FTP Server Export Profile**.
2. When the FTP Server Export Profile window opens, fill in the appropriate settings to allow Rosslare to connect and save frames here.
3. Click **OK** to save the settings and return to the Profiles Properties window.

6.2.2. Complete the Video Frame Export Setup Wizard

1. Click **Next** to continue the installation. The Action Summary window opens.
This page of the Video Frame Export Setup Wizard gives you a summary of all of the changes that you have made throughout the wizard.
2. Click **Next** to continue the installation. The Wizard Complete window opens.
Congratulations, you have now setup export of frames for the camera(s).
3. Click **Finish** to end the Video Frame Export Setup Wizard.

6.3 Enabling Video Transfer

The video transfer feature allows you to reduce network traffic between AS-525AV ViTrax Server and AS-525AV ViTrax Client (if remotely connected) and/or to decrease CPU load on the client side. Video transfer reduces the amount of data transferred from server to client by skipping some frames, transferring only motion detected frames, and recompressing or down sampling them without reducing recorded data quantity and quality. This feature is useful in slow remote connections or highly loaded networks when viewing cameras remotely. It effectively decreases image resolution or transfer fps on low-end systems, where AS-525AV ViTrax client is used for viewing large numbers of cameras. This approach reduces resolution and number of frames, waiting to be rendered on the screens.

To enable video transfer feature:

- From the **File** menu, click **Video → Transfer**.
The Video Transfer Properties window opens.

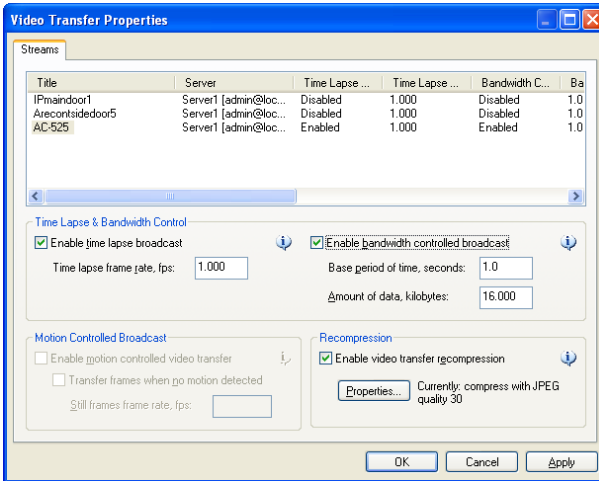


Figure 91: Video Transfer Properties Window

- In the **Time Lapse & Bandwidth Control** area, only check **Enable time lapse broadcast** checkbox on the remote connection if needed.
- Check **Enable bandwidth controlled broadcast** if needed to adjust data controlled broadcast.
- In the **Motion Controlled Broadcast** area, check **Enable motion controlled video transfer** remotely if you want to see video on motion only.
This is very helpful because frame rate is distributed to the cameras that have motion only.
- Check **Enable video transfer recompression**.



Note:

Video transfer recompression is useful for remote connections only.

AS-525AV ViTrax can usually record up to three mega pixel images. This feature allows the user to increase the frame rate with less image quality without changing the server properties.

- Click **OK** to save the settings.

6.3.1. Specify Transfer Defaults for Newly Added Devices

Specify default values of the transfer defaults for newly added devices. All options are identical to the Video Transfer properties.

To specify transfer defaults:

1. Right-click on the server in the structure pane.
2. Click **Properties**. The Properties window opens.
3. Click the **Video Transfer Defaults** tab.

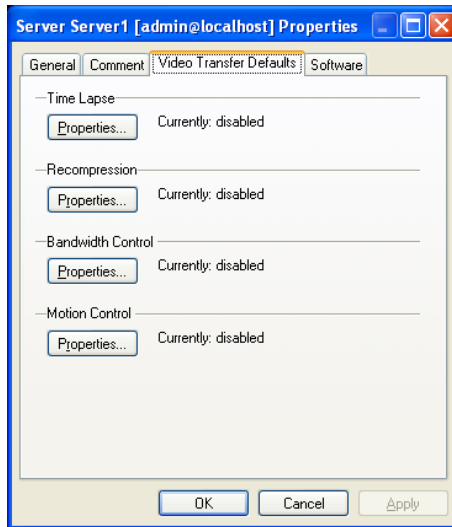


Figure 92: Video Transfer Defaults Tab

4. Set the desired properties in the following areas:
 - Time Lapse
 - Bandwidth Control
 - Motion Control
5. After selecting the settings, click **OK**.

6.4 Creating Custom Layouts

Create custom layouts by grouping cameras from different AS-525AV ViTrax servers/locations into groups for more efficient monitoring and better management. For example, you can group together all out-door cameras from different location or all POS cameras from all registers.



Note:

By default, empty screens are filled with available cameras. You can disable the automatic mapping mode feature through the Screen mapping tab in Options.

To create custom layouts:

1. Right-click on Layouts in the structure pane.

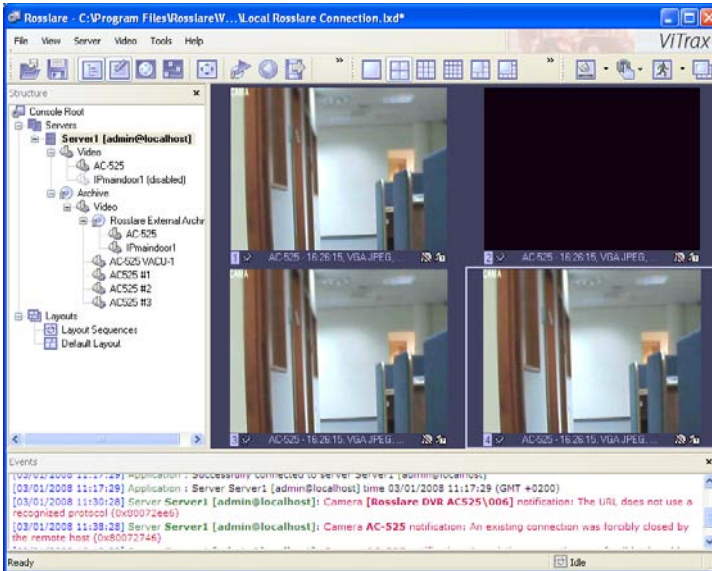


Figure 93: Layouts

2. There are four options in the dropdown menu:
 - Save Current Layout
 - Manage Layouts
 - Deactivate Active Layout Sequence
 - Manage Layout Sequences

6.4.1. Save Current Layout

View and select the current layout in the Structure Pane tree-view. The selected view opens in the Display Pane.

To save current layout:

1. Click **View** → **Select the Save Current Layout**. The Layouts window opens.

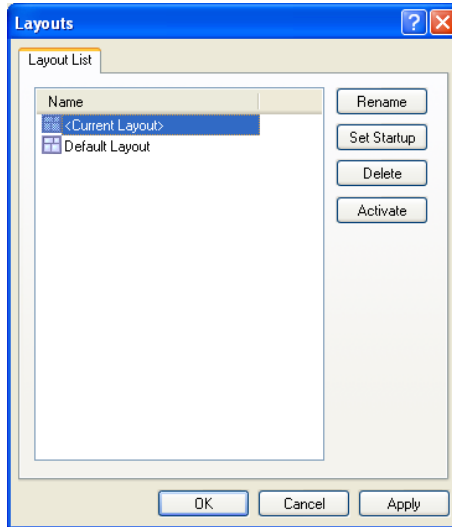


Figure 94: Layout List Window

2. Modify the current layout by selecting the Current Layout in the Name box and use the following buttons to modify:
 - **Rename** – Renames current layout
 - **Set Startup** – Program opens with this layout when starting up
 - **Delete** – Deletes current layout
 - **Activate** –Activates current layout

6.4.2. Create New Layout Sequence

When layouts are created, they can be used for sequencing.

To create sequences:

1. Right-click on **Layout**.
2. Click **Manage Layout Sequences** from the submenu.
The Layout Sequences window opens.

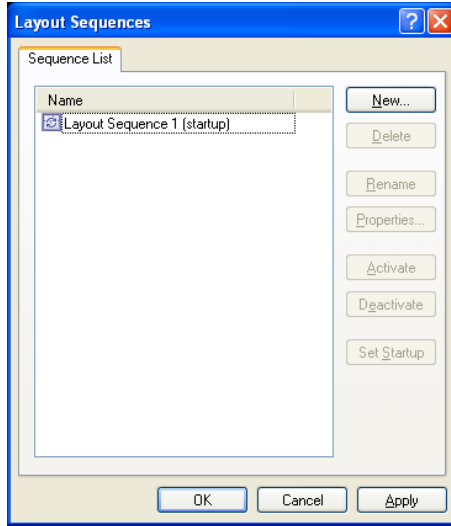


Figure 95: Layout Sequences Window

3. Click **New** to create a new sequence. The Layout Sequence Properties window opens.

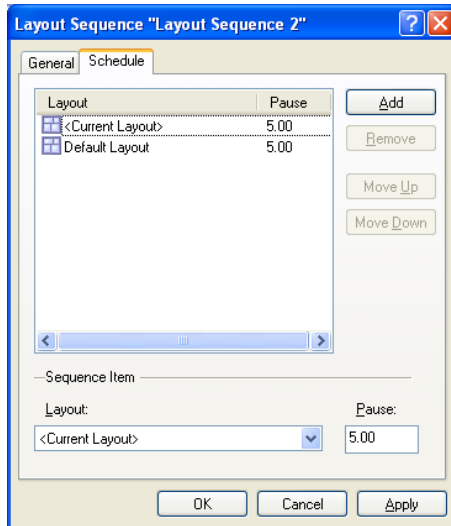


Figure 96: Schedule Window

4. Click the **Schedule** tab.
5. Click **Add** or **Remove** to add or remove sequences.

6. Click **Move Up** or **Move Down** to manage priority or remove layouts of the choice.
7. In the **Layout** area, choose existing layouts from the dropdown menu to add to a sequence.
8. In **Pause**, set the time interval between layouts.
9. After completing the desired settings, click **OK**.

6.5 Map Module Feature

The map module feature allows you to quickly and conveniently locate cameras for viewing placed on Google Map and/or on the own floor plans added in JPEG format.

To start the map module feature:

1. Click the map icon on the toolbar.
AS-525AV ViTrax Maps window opens.

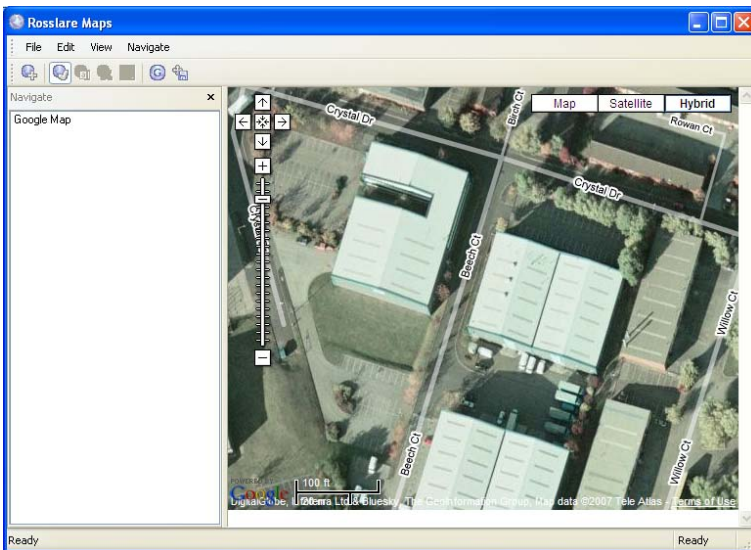


Figure 97: AS-525AV Maps Window

Use the navigational tools to navigate around the map.



Pan up, pan down



Pan left, pan right



Return to the last result

Zoom in, Zoom out slider

Use the view buttons on the map to display different views of the map:

Map Shows a street map

Satellite Shows satellite imagery

Hybrid Shows satellite imagery with street names

2. Right-click on the map and use context menu commands to configure and control map features.

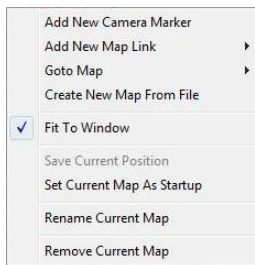


Figure 98: Context Menu Commands

Add New Camera Marker	This option adds a camera marker in designated menu (See Add New Camera Marker, on page 102)
Goto Map	Navigate to other maps in appeared list
Create New Map From File	Add new map from JPEG image file to be used as background
Fit To Window	The JPEG map strains on the window while maintaining its

Save Current Position	aspect ratio Used in Google map to save its current position
Set Current Map As Startup	Sets current map as startup map. Selected map loads when viewing this map module
Rename Current Map	Rename currently selected map
Remove Current Map	Delete currently selected map

6.5.1. Add New Camera Marker

1. After choosing this menu option, select from a list of servers and cameras.
2. After adding new marker, double click on the marker to activate the matching camera.

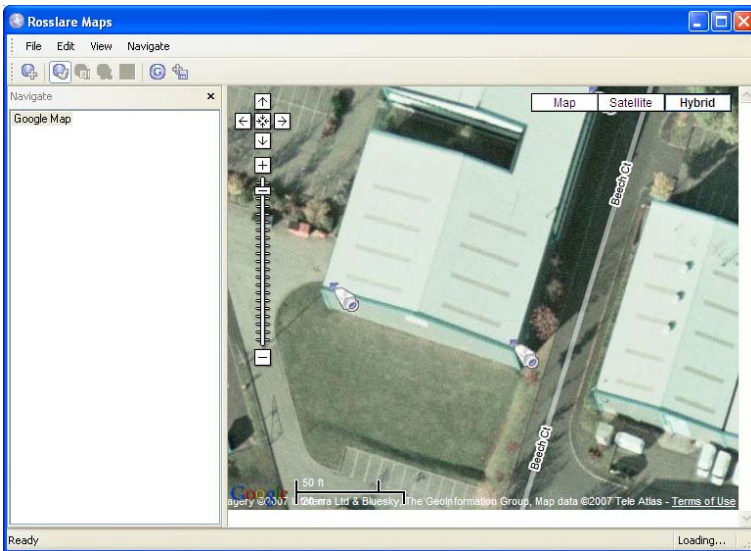


Figure 99: Add New Camera Marker

3. To remove the marker, right-click on the marker and choose according to popup menu item.

6.6 Archiving Backup Wizard

The purpose of the Archive Backup wizard is to backup specific parts of the archive or burn CD/DVD with the archive and Archive Viewer on it. This can be useful to create backup copies of the archive with lower fps, or writing specific part of the archive on the CD for other machines without AS-525AV ViTrax installed on them.



Note:

This wizard works only on the same machine AS-525AV ViTrax server is installed.

To run the Archive Integrity wizard:

1. From the structure pane, right-click the server name.
2. Select **Tasks → Backup Server's archive data**. The **ViTrax Server Archive Backup Wizard** opens. When the Introduction to the Archive Backup Wizard opens, click **Next** to continue the Archive Backup wizard. The Select cameras to backup window opens.

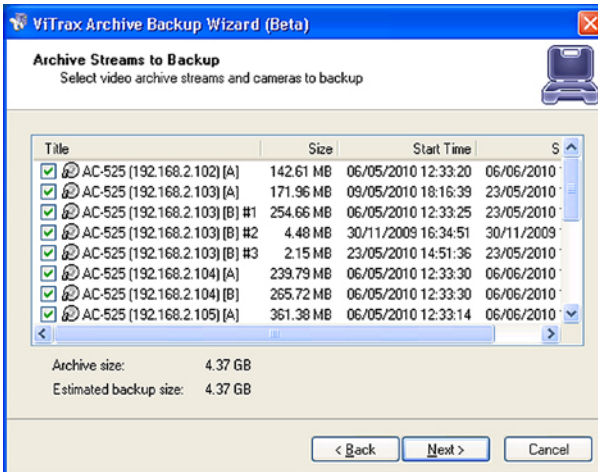


Figure 100: Select Cameras to Backup Window

1. Select one or more cameras you want to backup from the list. The original file size is shown; the estimated archive size appears on every page of this wizard.



Note:

You can decrease the estimate size by deselecting some of the cameras, changing the time range. Or

decreasing fps (frames per second) of archives already backed up.

- Click **Next** to continue the wizard. The Time Selection screen opens.

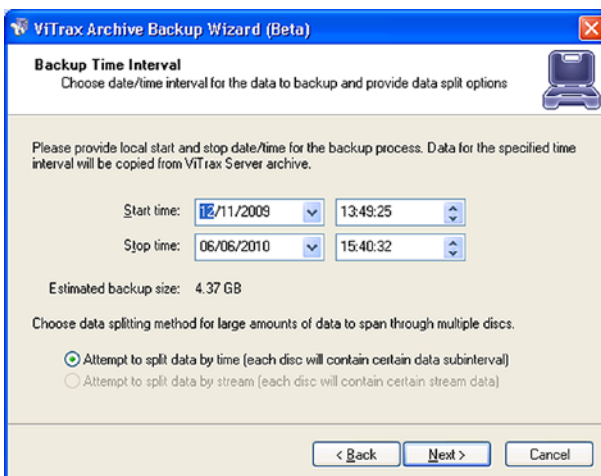


Figure 101: Time Selection Window

- Enter a start and stop time to change the time range. You can also set data split (when recording to a CD, by either Time or Stream). Click **Next** to continue.

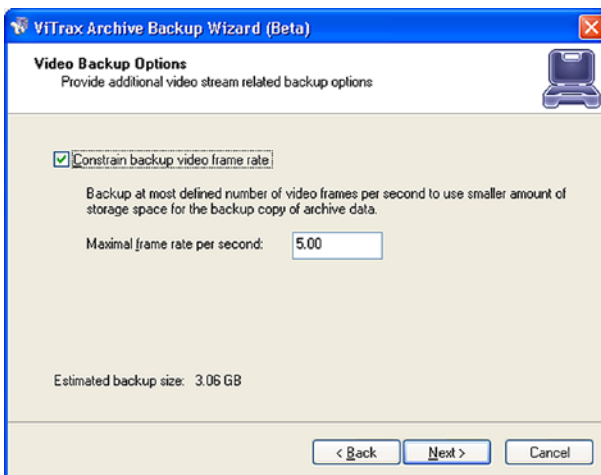


Figure 102: Advanced Backup Options

4. Check the Constrain backup video frame rate and enter a number smaller than the displayed number to decrease the frame rate thus reducing file size.
5. Click **Next** to continue the wizard. The Backup Destination window opens.

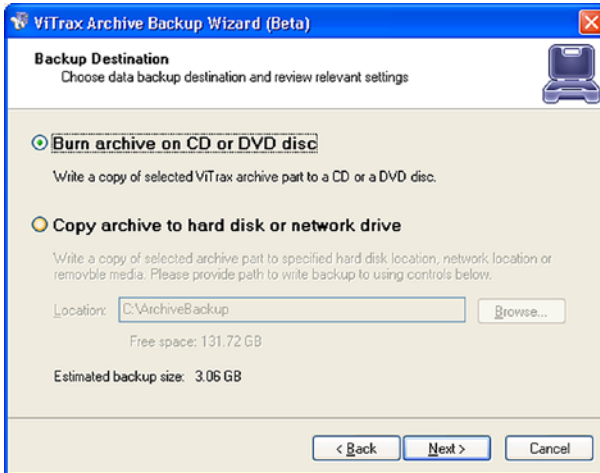


Figure 103: Backup destination Window

6. Select backup type by clicking **Copy archive onto hard or network drive**. In **Location**, enter the desired location to store backup or **Browse** to select a location. Click **Next** to begin archiving.
Or
Click **Write on CD/DVD** and click **Next** to set CD/DVD burning options.
 - Select the interface used for CD/DVD burning, this can be either Nero Burning ROM (requires NERO to be installed) or IMAPI.
 - Select the CD/DVD drive, you can also browse for the device.
 - Select ejection behavior.
 - Click **Next** to begin burning process.

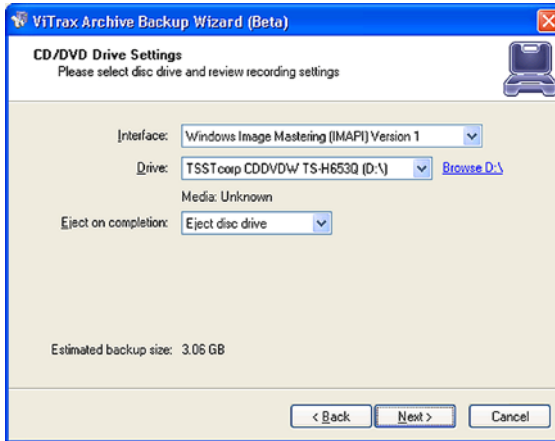


Figure 104: Advanced CD/DVD Burning Options Window

7. Click **Next** to continue to the Backup wizard finish screen.

6.7 Playback Video

Playback the recorder videos with the playback feature.

To playback the recorder video:

1. Right-click on the server name in the structure pane.
2. Select **Tasks** → **Open archive** Or Right-click on any camera view and select **Open archive**. The Archive window opens.

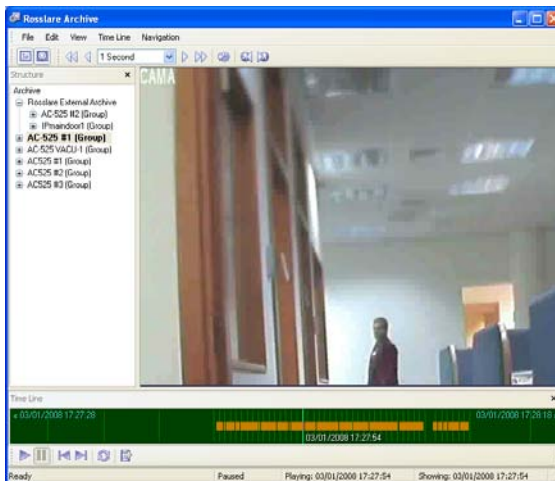


Figure 105: Playback Screen

6.7.1. Understand the Playback Screen

Now that you are in the playback screen, the structure pane on the left lists all of the cameras that you have recordings for.

Double click on the camera for playback. This camera now appears with footage on the video screen.

The Playback screen contains the following:

Color coded time line



The solid green line on the bottom represents time. The light green lines represent recorded video. The orange lines represent motion information and light blue represents Audio.

VCR basic controls



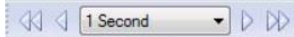
There are basic VCR controls on the bottom of the playback screen, which you can use to play, pause, forward, and rewind.

Job dial



You can drag in either direction to browse through the video in high speeds.

Fast forward arrow controls



Use the arrow controls on top of the screen to define how many increments of time you would like to move through the video or select from the dropdown menu:

- 1 Second
- 10 Seconds
- 1 Minute
- 10 Minutes
- 1 Hour

Playback motion



Use these **previous motion** or **seek next motion** buttons to seek video with actual motion in order to save time

Smart search

You can search the screen through video and also by motion in a specific part of the camera screen

You can define a specific object in the view, or define a path, and seek through motion only in that specific region.

Define motion of interest

Select a specific area on the screen to define motion (See below)

To define motion of interest:

1. From the menu bar click **Navigation** → **Define Region of Motion Interest**. The Region of Motion toolbox opens.

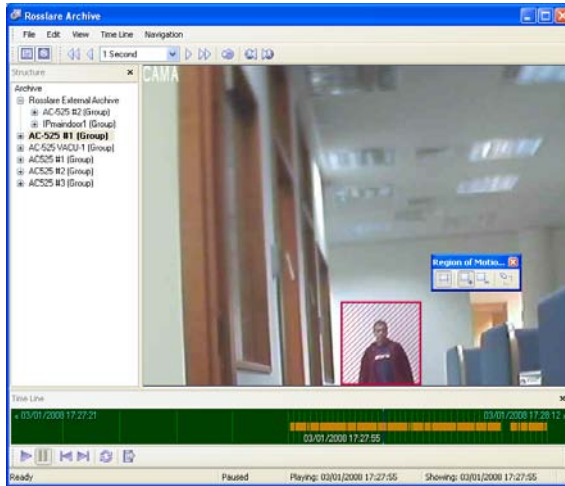


Figure 106: Region of Motion Interest Toolbox

2. Click the **Seek to previous motion** or **seek to next motion** icons to search through motion in the defined area(s).

6.8 Exporting Video

Use the Export wizard to export video. To prevent the section of recordings you want to export from being overwritten, first select a different location for the recordings you want to export before running this wizard.

To run the Export wizard:

1. Click **Edit** on the playback screen.
2. Click **Export Wizard**.

Following the Welcome screen, the Archive Export – User Interface (GUI) Complexity window opens.



Figure 107: Archive Export – User Interface (GUI) Complexity window

3. Select either Simple mode or Advanced Mode to determine the level of complexity in your setup choices. Click **Next** to proceed. The Archive Export – Export Type window opens.

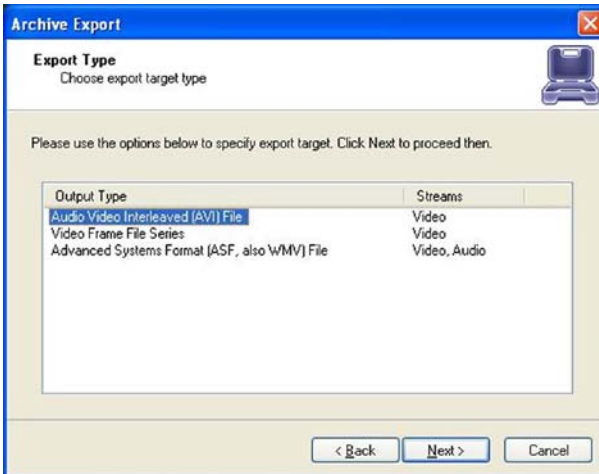


Figure 108: Archive Export – Export Type window

4. Select the output file type between Avi, Jpg, or asf / WMF. Click **Next** to proceed. The Archive Export – Video Stream window opens.

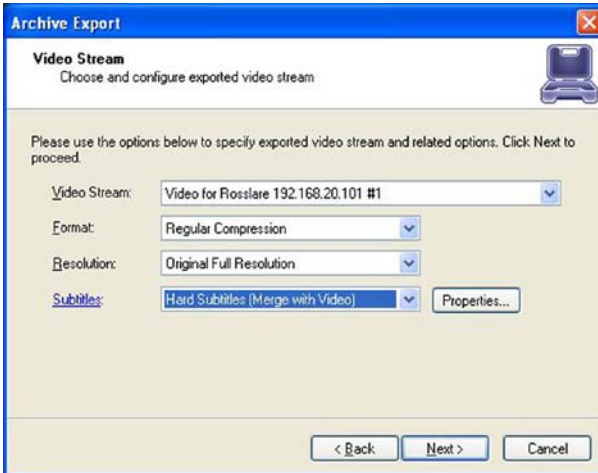


Figure 109: Archive Export – Video Stream Window

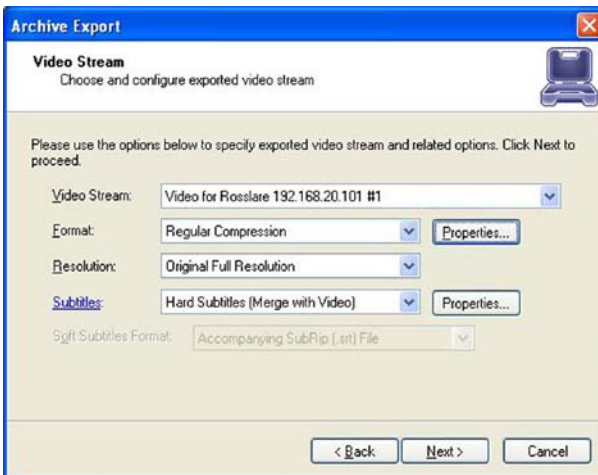


Figure 110: Archive Export – Video Stream Window – Advanced

5. Select the camera you want to export video from the **Video Stream** dropdown menu.
6. Select one of the compression options from the **Format** dropdown menu, if you selected the *Advanced* option in step 3, click **Properties...** to fine tune your format compression.
7. Select the video stream resolution from the **Resolution** dropdown menu.

8. Select the Subtitle file type from the **Subtitles** dropdown menu.
Click **Properties...** to define the subtitle's font parameters.
If you selected the *Advanced* option in step 3 you have the option of creating subtitles in a separate file rather than integrated into the video, in such a case, select the external file format from the Soft Subtitles Format dropdown menu.
Click **Next** to proceed. The Archive Export – Export Options window opens.

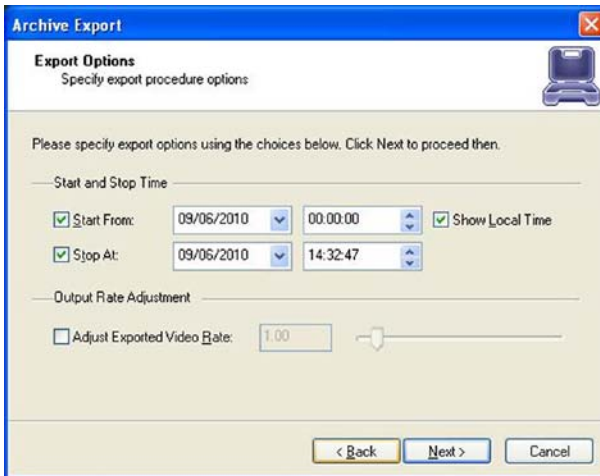


Figure 111: Archive Export – Export Options Window

9. Narrow down the time frame of the video stream to be exported using the **Start and Stop Time** options.
10. To adjust the output frame rate, check the **Adjust Exported Video** rate, and either enter the value or use the frame rate slider.
Click **Next** to start exporting the video stream based on your selection.

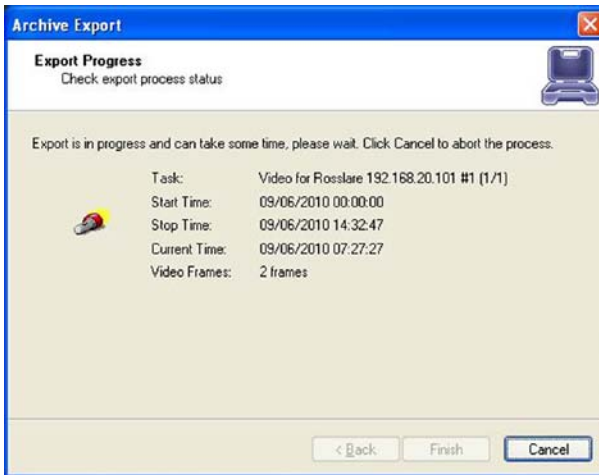


Figure 112: Archive Export – Export Progress Window

6.8.1. Export Snapshots

Another way to save images is by creating screen captures, or snapshots, one frame at a time.

To export snapshots:

1. in the live view Right-click the stream you wish to create a snapshot of and select **Save Current Frame As...** the same option can be accessed from the Video command in the menu bar, alternatively, use the keyboard shortcut Ctrl+Shift+S. In the review screen the option can only be reached from the video menu or using the keyboard shortcut.
2. Select a location and filename for the image.
3. Choose the file type you wish to save, Jpeg or Bitmap
4. Click **Save**.
Now you have the image stored in order to print, e-mail, or enhance that snapshot.

7. Upgrading AS-525AV ViTrax Software

To check for upgrades and new versions contact Rosslare Technical Support, or visit the Rosslare support site for information on new version releases.

Updating the software requires all AS-525AV ViTrax services to stop before Installation.

During the installation of the new version you may encounter a message with regards to previous installation configurations, if applicable. Specifically, would you like to use existing database?

1. Click **Yes** to keep all current configurations of the server. This is the recommended option.
or
2. Click **No** to start a new database. All previous settings and configurations are erased and a new database is created. Continue with the installation (see Installing AS-525AV ViTrax PC Software on Page 10.)

Appendix A. Additional Utilities

A.1. Authentication Validator

The watermark authentication validator utility, checks the video file to verify authenticity, ensuring that the images are identical to the ones exported from the ViTrax software and were not manipulated or modified using various editing applications.

To run the Watermark Validator:

1. From the **Start** menu, select **Rosslare → ViTrax → Tools → ViTrax Server watermark Validator**. The Watermark Validator utility opens.

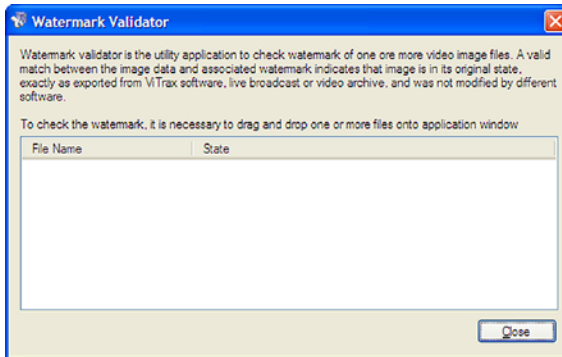


Figure 113: Watermark Validator Wizard

2. Drag one or more video or screen capture files into the Watermark Validator screen.
3. The utility will begin testing the file(S), once complete, a list of all the files dragged will appear in the list showing the file name, and status, including the number of frames in the file and if different how many frames are different.

File Name	State
06190036.avi	Failed. Frames 109, unsigned frames 109
test2.avi	OK, Frames 552
Snapshot.jpg	OK
test.avi	No stream found
06190037.avi	Failed. Frames 150, unsigned frames 150
06190035.avi	Failed. Frames 150, unsigned frames 150

Figure 114: Watermark Validator Wizard result

A.2. Camera Status Report Utility

The ViTrax comes with a utility that checks the various cameras associated with the server defined in the software.

The complete report opens as an HTML file in your web browser which you can then save for your convenience.

To run the camera status report utility:

1. From the **Start** menu, select **Rosslare → ViTrax → Tools → ViTrax Server Camera Status report**.

Or

- From within the ViTrax software, select **Tools → Utilities → Camera Status report**.

The camera status report utility window opens.

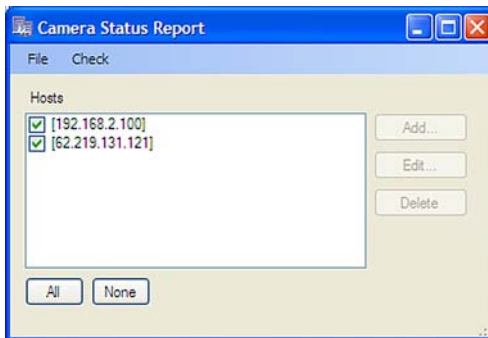


Figure 115: Camera Status Report Utility Window

2. Select one or more available servers from the list.
3. Click **Check → Start** to launch the test.
4. Once completed a full report will automatically open in your Web Browser.

Appendix B. Detailed Computer Specifications

The tables below provide detailed specifications based on server and client settings.

B.1. ViTrax Server Computer Specifications Minimum Requirements

MPEG4 compression, motion detection disabled

No. of Cameras	CPU	Speed	RAM
Personal (1 cam.)	Intel Atom 1 Core	1.6Ghz	512MB
Basic (4 cam.)	Intel Celeron	2.0Ghz	768MB
Professional (9 cam.)	Intel Pentium 2 Cores	2.4Ghz	1GB
Advanced (16 cam.)	Intel Core 2 Duo	2.2Ghz	2GB

MPEG4 compression, motion detection enabled

No. of Cameras	CPU	Speed	RAM
Personal (1 cam.)	Intel Celeron	2.2Ghz	512MB
Basic (4 cam.)	Intel Pentium 2 Cores	2.4Ghz	768MB
Professional (9 cam.)	Intel Core 2 Duo	2.8Ghz	1GB
Advanced (16 cam.)	Intel Core 2 Quad / i7	2.6Ghz	2GB

B.2. ViTrax Client Computer Specifications Minimum Requirements

No. of Cameras	CPU	Speed	RAM
Personal (1 cam.)	Intel Celeron	2.2Ghz	512MB
Basic (4 cam.)	Intel Pentium 2 Cores	2.4Ghz	768MB
Professional (9 cam.)	Intel Core 2 Duo	2.8Ghz	1GB
Advanced (16 cam.)	Intel Core 2 Quad / i7	2.6Ghz	2GB

Appendix C. Technical Support

Asia Pacific, Middle East, Africa

Rosslare Security Products Headquarters
905-912 Wing Fat Industrial Bldg,
12 Wang Tai Road,
Kowloon Bay Hong Kong
Tel: +852 2795-5630
Fax: +852 2795-1508
E-mail: support.apac@rosslaresecurity.com

United States and Canada

1600 Hart Court, Suite 103
Southlake, TX, USA 76092
Toll Free: +1-866-632-1101
Local: +1-817-305-0006
Fax: +1-817-305-0069
E-mail: support.na@rosslaresecurity.com

Europe

Global Technical Support & Training Center
HaMelecha 22
Rosh HaAyin, Israel 48091
Tel: +972 3 938-6838
Fax: +972 3 938-6830
E-mail: support.eu@rosslaresecurity.com

South America

Pringles 868, 1640 Martinez
Buenos Aires
Argentina
Tel: +54 11 4798-0095
Fax: +54 11 4798-2228
E-mail: support.la@rosslaresecurity.com

Web Site: www.rosslaresecurity.com

ROSSLARE
SECURITY PRODUCTS

CE

0706-0960233+01