

Installing Microsoft SQL Server 2012 Express for AxtraxNG

Requirements:

1. Windows 7 or 8, 32 or 64 bit, earlier versions of windows must use SQL Server 2005. For Windows 7, Service Pack 1 is **required** to install SQL Server 2012. If your system is not up to date please install SP1 before continuing.
2. .NET 4.0 is a requirement for SQL Server 2012. SQL Server installs .NET 4.0 during the feature installation step. If you are installing the SQL Server Express editions, ensure that an Internet connection is available on the computer. SQL Server Setup downloads and installs the .NET Framework 4 because it is not included in the SQL Server Express media.
3. If you run Setup on a computer with the Windows Server 2012 or Windows 8 operating system, the SQL Server Setup automatically downloads and installs the .NET Framework 3.5 SP1. This process requires internet access. If there is no internet access, it is required to download and install .NET Framework 3.5 SP1 **before you run Setup** to install any of the above mentioned components.

Procedure:

1. Download the software from Microsoft at the following link;
<http://www.microsoft.com/en-us/download/details.aspx?id=29062>
 - a. Select Download.
 - b. Select the file **ENU\x86\SQLEXPRESS_x86_ENU.exe**
(*this file contains both the 32 and 64 bit versions*)
2. Run the installer, right click the file and select "Run as Administrator".

Installing Microsoft SQL Server 2012 Express for AxtraxNG

3. Select **New SQL Server stand-alone installation** as shown in figure 1;

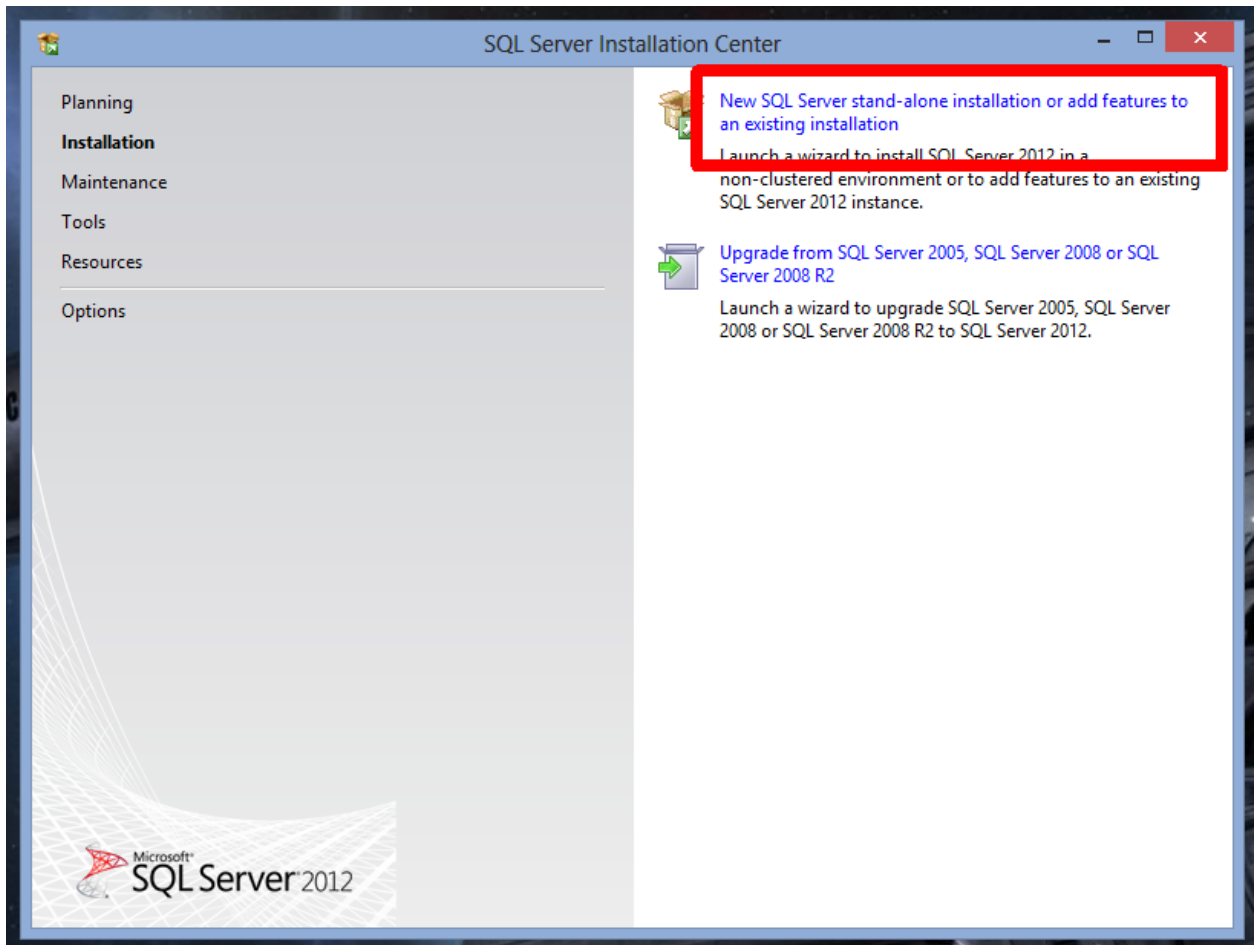


Figure 1

Installing Microsoft SQL Server 2012 Express for AxtraxNG

4. Accept the License Terms and press **NEXT**;

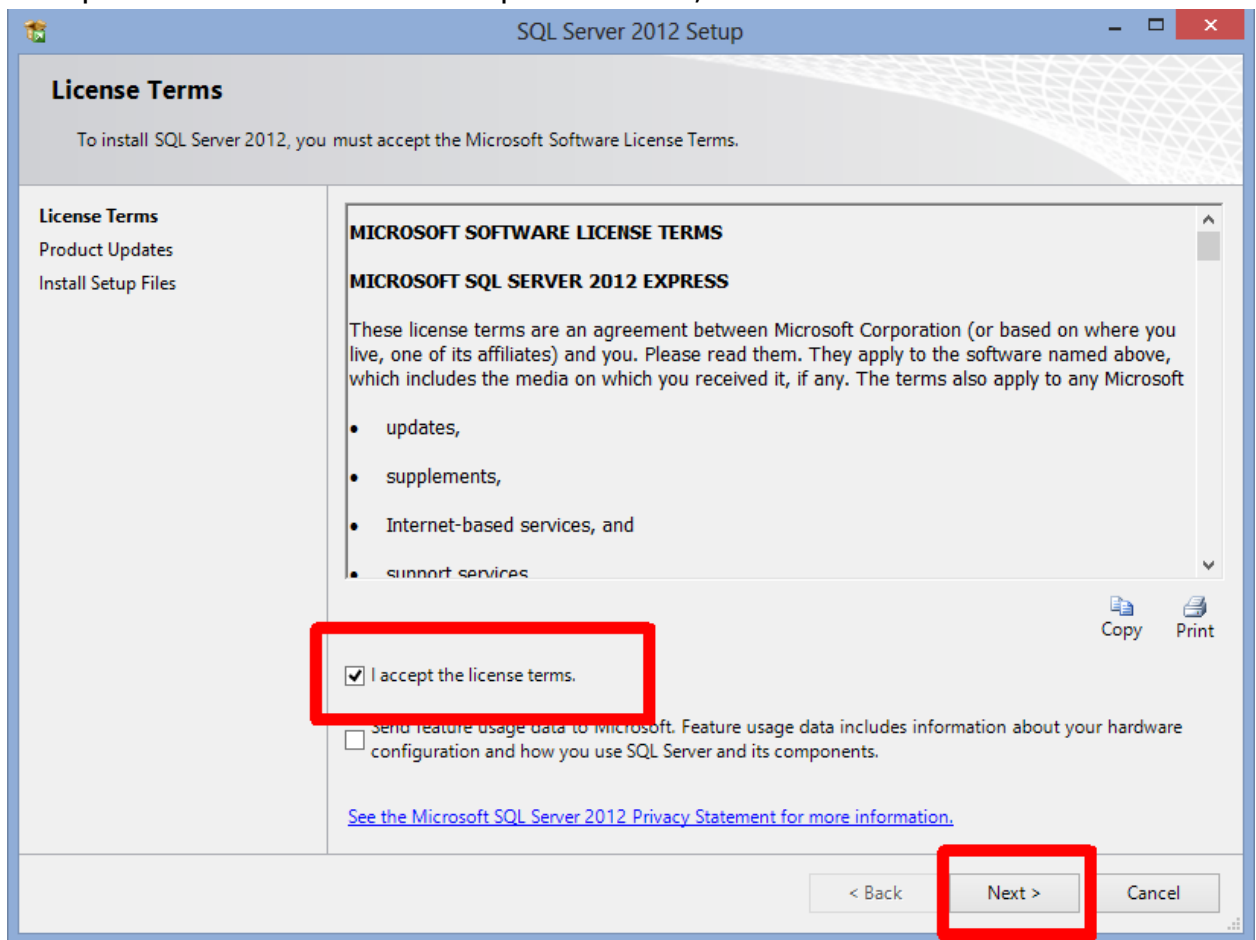


Figure 2

Installing Microsoft SQL Server 2012 Express for AxtraxNG

5. At the Product Updates screen select **NEXT**;

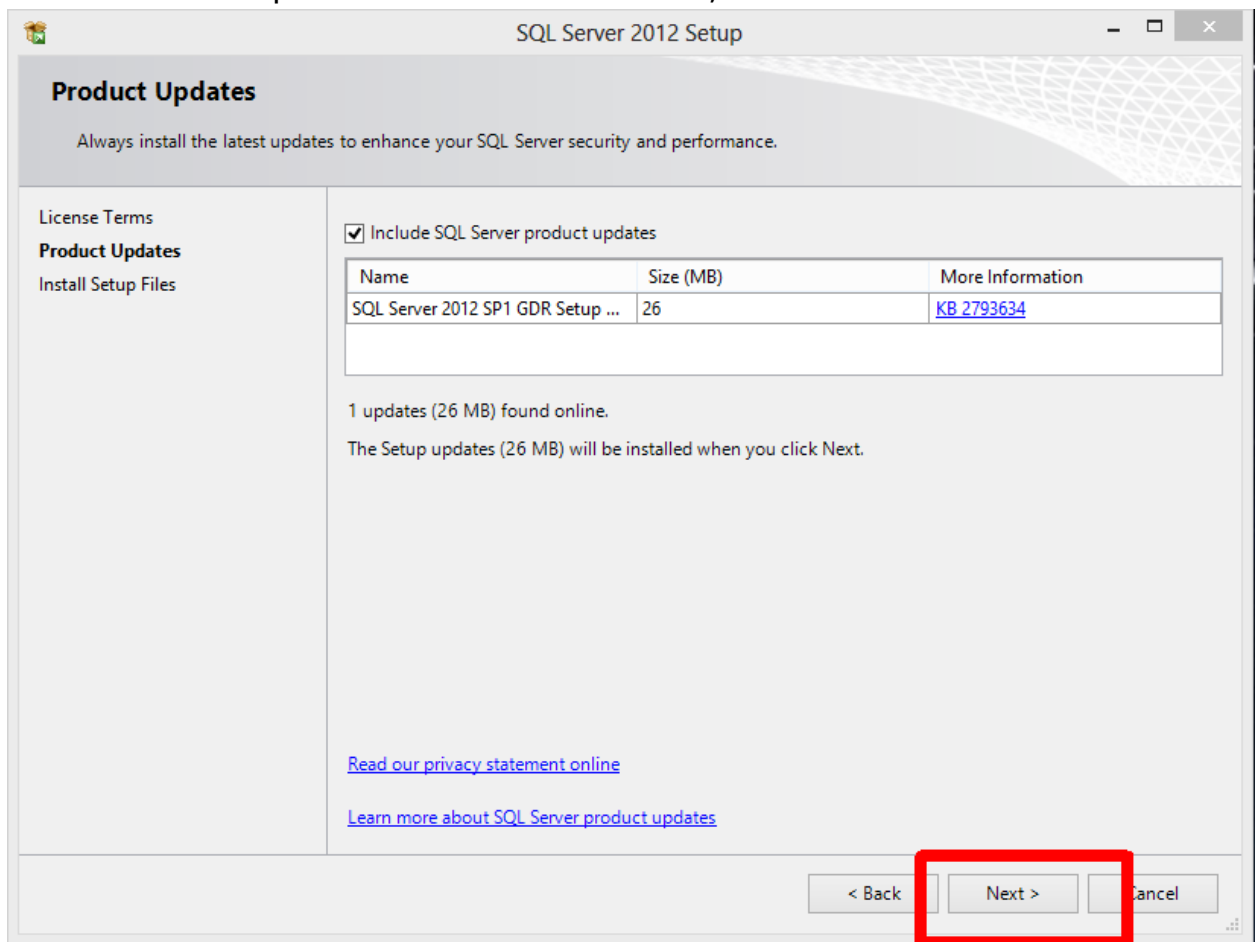


Figure 3

Installing Microsoft SQL Server 2012 Express for AxtraxNG

6. On the Feature Selection screen insure that **Database Engine Services** are enabled and the other options are not then select **NEXT**.

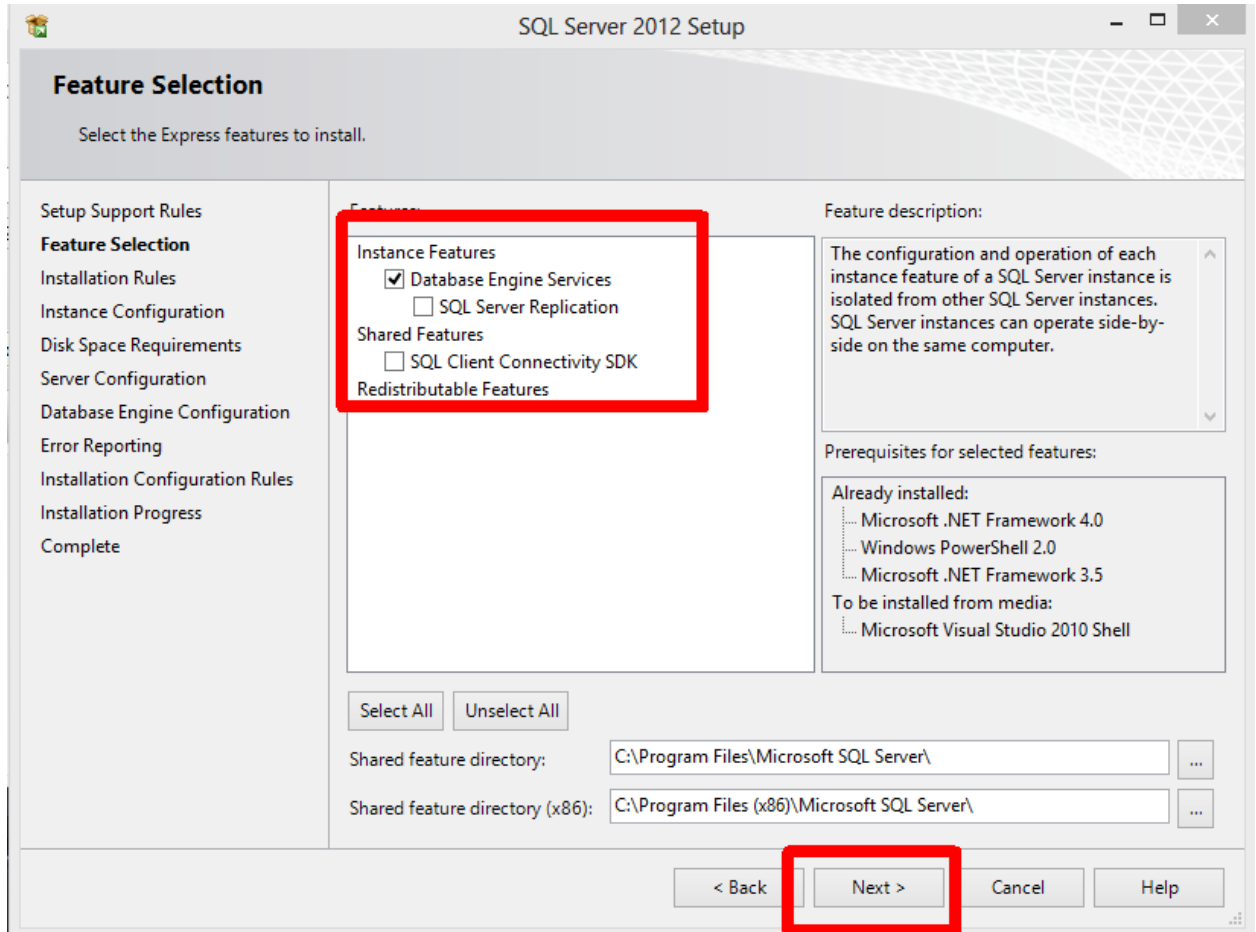


Figure 4

Installing Microsoft SQL Server 2012 Express for AxtraxNG

7. On the Instance Configuration screen, enter “**Veritrax**” without the quotes for the new instance name as shown in Figure 5 then select **NEXT**;

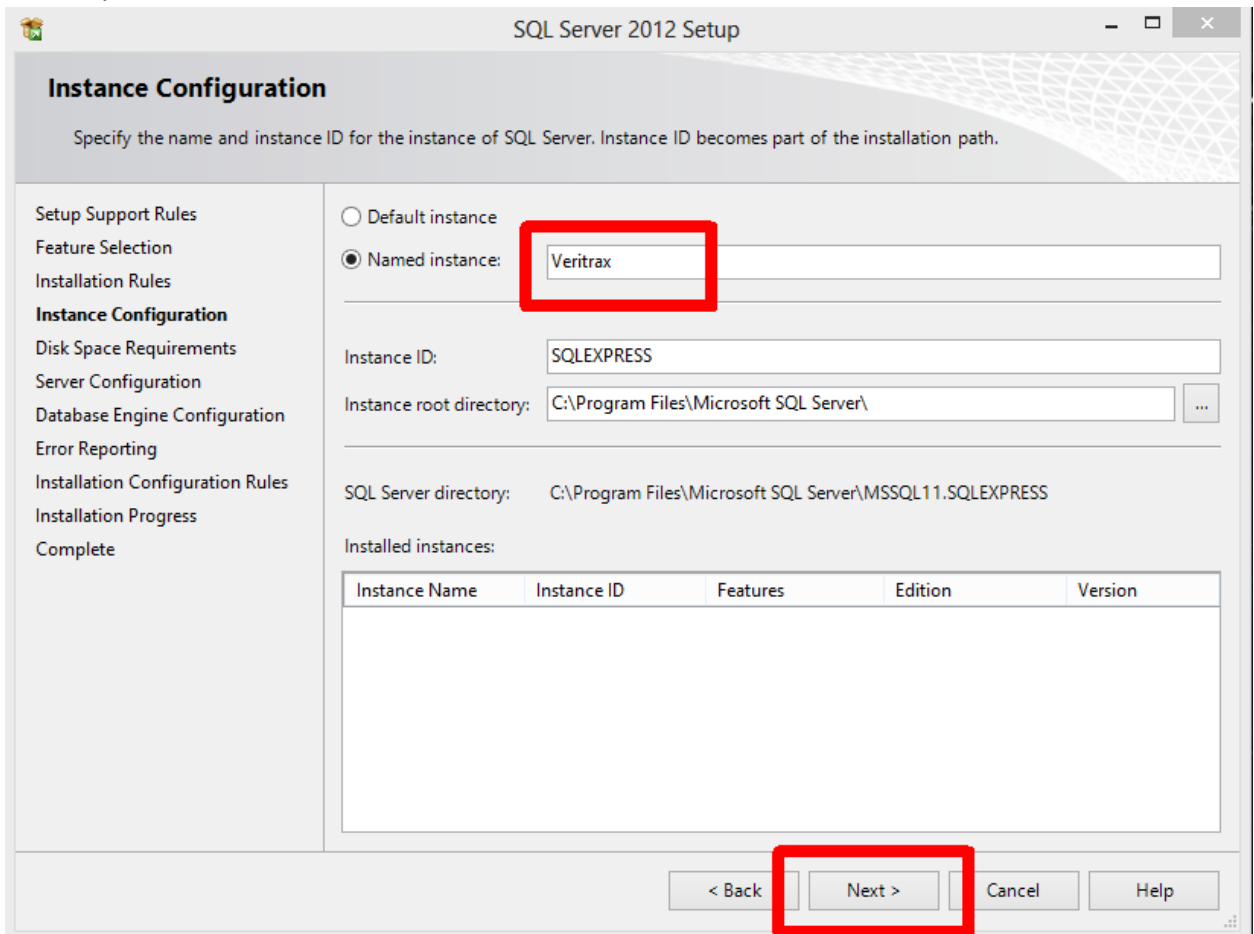


Figure 5

Installing Microsoft SQL Server 2012 Express for AxtraxNG

8. On the Server Configuration screen enter the Account Name to **NT Authority\system** by typing it as shown the then select **NEXT**;

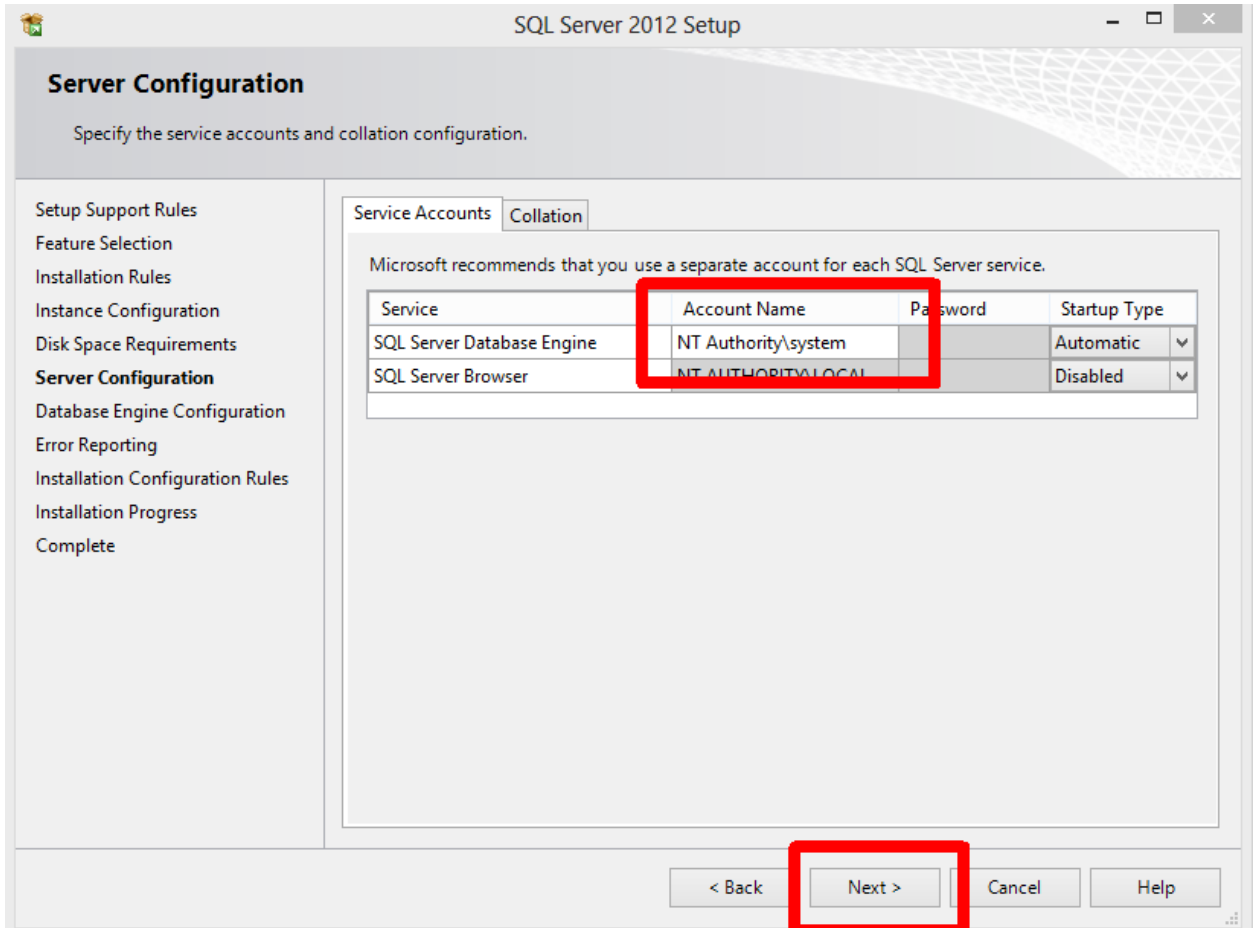


Figure 6

Installing Microsoft SQL Server 2012 Express for AxtraxNG

9. On the Database Engine Configuration screen change the Authentication Mode to **Mixed Mode** and TYPE the following Password in both blanks; **Bod33|en17?ha!**
(!!! Cut and Paste does not work well !!!)

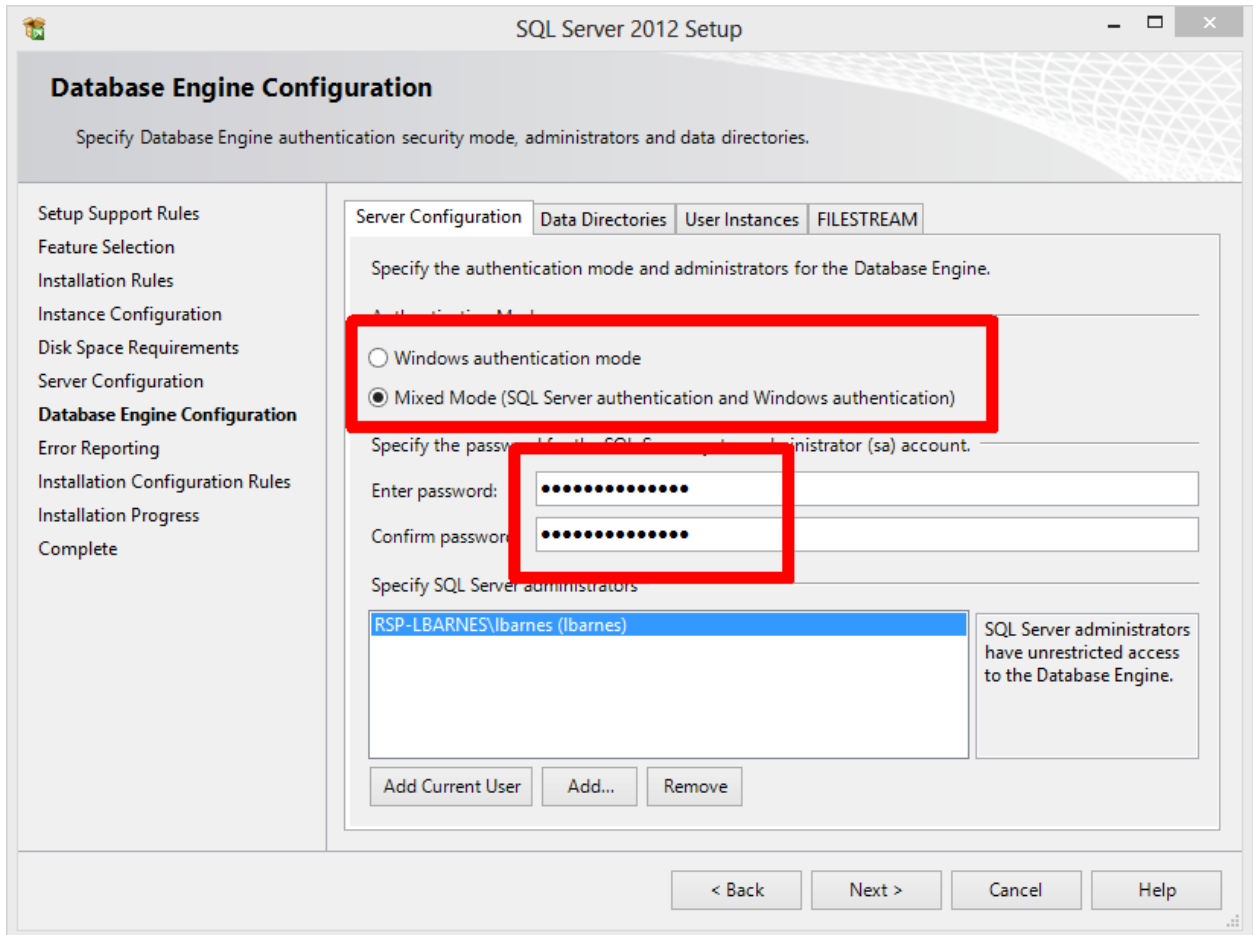


Figure 7

(note: the vertical bar | is the shifted \ key above the ENTER key and below the backspace key, all alpha characters (letters) are lower case except the first B. Cut and Paste does not work well !)

Installing Microsoft SQL Server 2012 Express for AxtraxNG

10. On the Error Reporting screen just select **NEXT**;

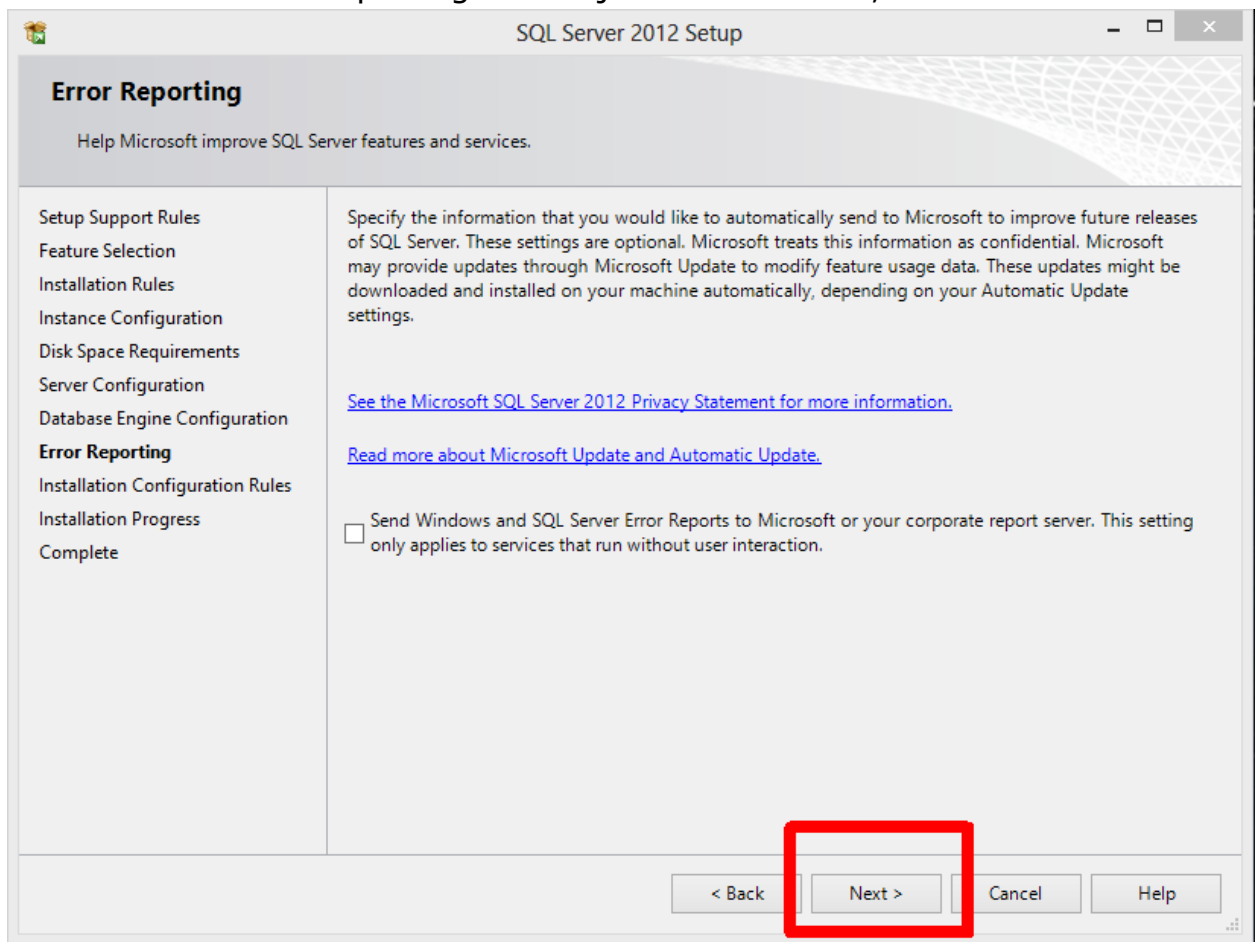


Figure 8

After this step, the actual installation will run. This will take several minutes even on a fast computer. Do not interrupt the installation or cancel it as a partial installation can be very difficult to recover from. Several different screens will come up as the installation progresses, be patient until the **complete** screen comes up.

Installing Microsoft SQL Server 2012 Express for AxtraxNG

11. If the installation works properly you will get the following screen showing all of the components installed, just click **CLOSE** to exit the installer.

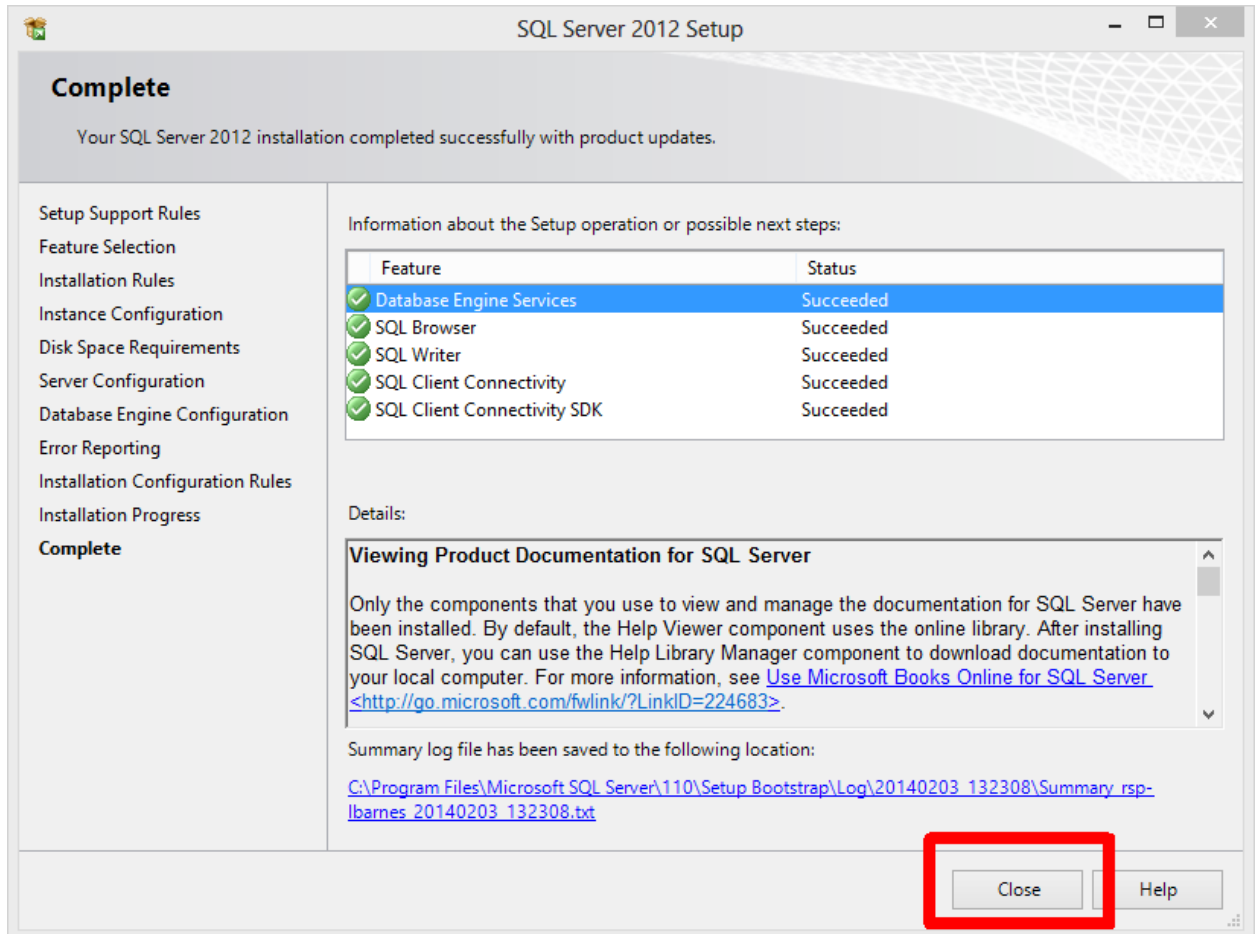


Figure 9

You should now be able to complete the install of AxtraxNG version 23.0 or later (SQL Server 2012 is not compatible with earlier versions of AxtraxNG or Axtrax AS525). If you still have problems with AxtraxNG connecting to SQL server please make sure you have done the following;

1. Reboot the PC after installing the AxtraxNG server software.
2. Disable antivirus software that may be blocking the connection.
3. Login with administrator privileges.

If all of these fail please contact Rosslare Security Technical Support for assistance; 1-866-632-1101 opt 4.